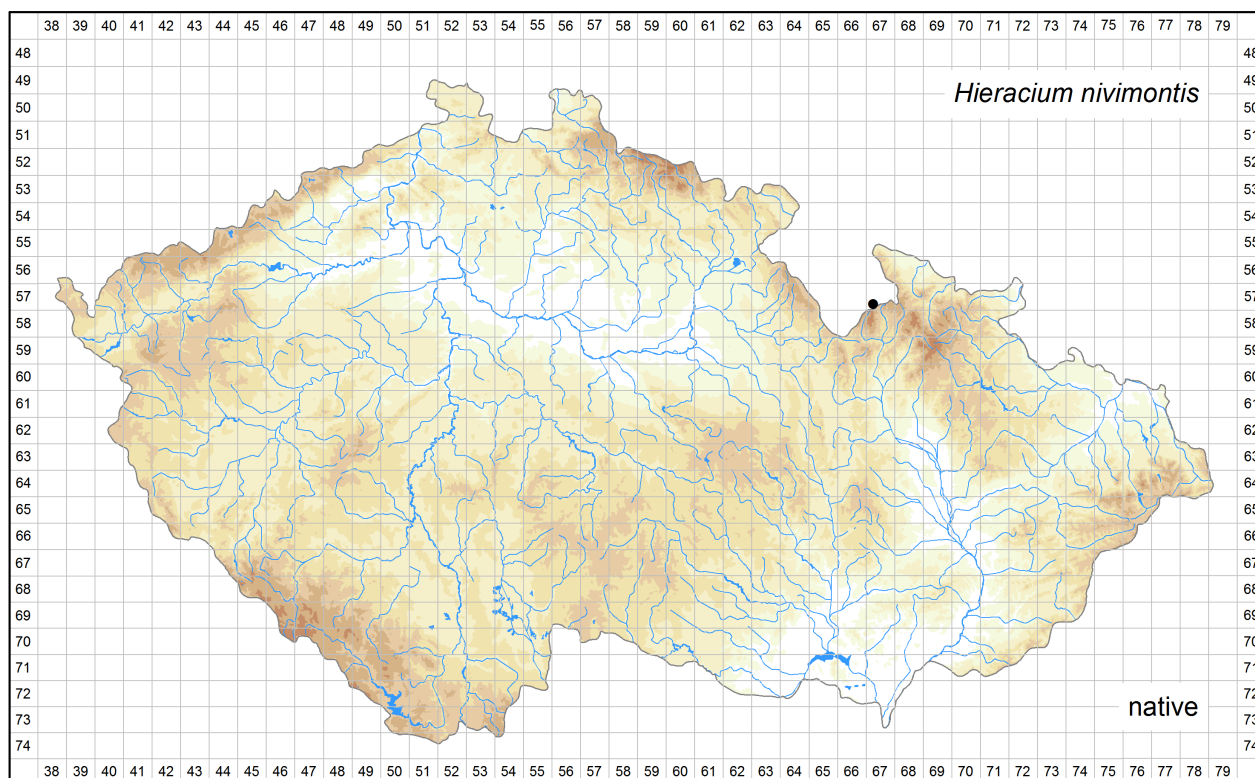


Distribution of *Hieracium nivimontis* in the Czech Republic

Author of the map: Jindřich Chrtek, Jiří Kocián

Map produced on: 11-11-2016



Database records used for producing the distribution map of *Hieracium nivimontis* published in Preslia.

Coordinate system: WGS84.

The mapping symbols used in the distribution map to indicate the different attributes of the occurrence in a particular grid cell.

Attribute distinguished	Symbol	Attribute state
None	●	all records
Time	●	recent occurrence (at least one record since 2000)
	●	old occurrence (all records before 2000, or demonstrably being extirpated from all localities after 2000, or all records undated)
Origin	●	native (at least one record)
	×	alien
Source data	●	a revised herbarium specimen (at least one record)
	▲	all other
All	?	only record(s) uncertain regarding identification and/or locality

Abbreviations of projects (data sources):

Excerpt Atlas: Taxonomic Experts' Records for Atlas of the Distribution of Vascular Plants in the Czech Republic (managed by Institute of Botany, The Czech Academy of Sciences)

The records listed below are arranged according to the grid numbers and given in their original language, usually in Czech, German or Latin. The following header fields are used: původní jméno – original name (original identification, received as or published as); lokalita – locality; nejbližší obec – nearest city, town or village; souřadnice – geographic coordinates; nadmořská výška – altitude; fytochorion – phytogeographical district; datum – date; nálezce – author of the field record or collector; pramen – source; herbář – herbarium collection; projekt – project; poznámka – comments imported into the Pladias database or added later; původnost – geographic origin (původní – native; nepůvodní – alien); ID – record ID.

5767c

lokalita: Kladský Sněžník, vrchol
nejbližší obec: Velká Morava, okres Ústí nad Orlicí
souřadnice: 50°12'24.54"N, 16°50'53.70"E, ± 200m
fytochorion: 96. Králický Sněžník
datum: 1919-07
nálezce: F. Schustler
herbář: PR
projekt: Excerpt Atlas
ID: 13182177

původní jméno: *Hieracium polymorphum* var. *pseudopersonatum* G. Schneid.
lokalita: Glatzer Schneeberg, am Gipfel
nejbližší obec: Velká Morava, okres Ústí nad Orlicí
souřadnice: 50°12'24.54"N, 16°50'53.70"E, ± 200m
fytochorion: 96. Králický Sněžník
datum: 1899-07
nálezce: A. Oborny
herbář: PR;PRC
projekt: Excerpt Atlas
ID: 13182176

lokalita: Glatzer Schneeberg, am Gipfel
nejbližší obec: Velká Morava, okres Ústí nad Orlicí
souřadnice: 50°12'24.54"N, 16°50'53.70"E, ± 200m
fytochorion: 96. Králický Sněžník
datum: 1907-07-26
nálezce: A. Oborny
herbář: PRC
projekt: Excerpt Atlas
ID: 13182178