

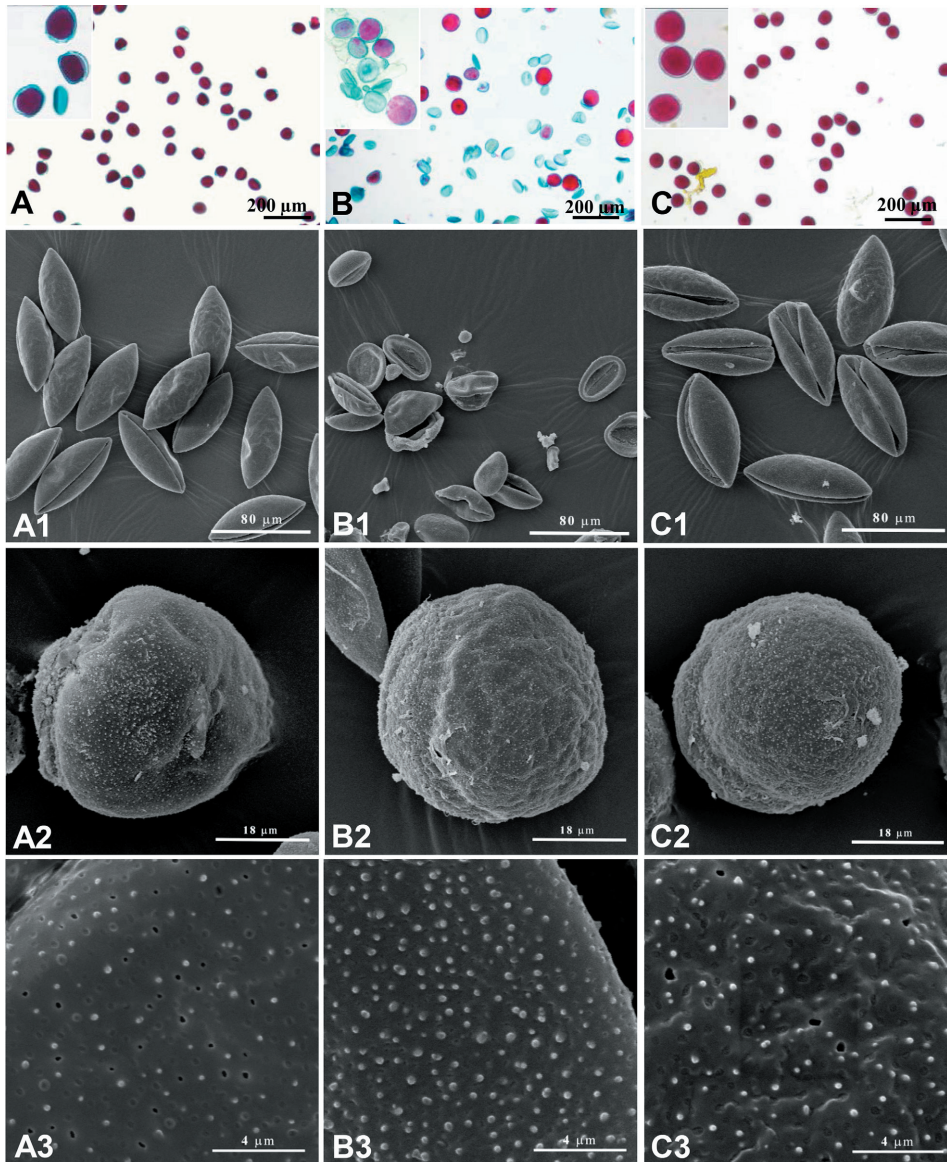
Szczepaniak M., Kamiński R., Kuta E., Słomka A., Heise W. & Cieślak E. (2016): Natural hybridization between *Gladiolus palustris* and *G. imbricatus* inferred from morphological, molecular and reproductive evidence. – *Preslia* 88: 137–161.

Electronic Appendix 1. – List of individuals of *Gladiolus palustris*, *G. imbricatus* and *G. ×sulistrovicus* genetically analyzed (nrDNA, cpDNA) in the present study and their GenBank numbers. *The origin of individuals examined in the AFLP analysis is provided in Cieślak et al. (2014). Specimens from the herbaria of the W. Szafer Institute of Botany, Polish Academy of Sciences, Kraków (KRAM) and Jagiellonian University, Kraków (KRA), are identified by the herbarium number. [...] – the approximate location of specimens from herbaria KRAM and KRA. UWr – Wrocław University.

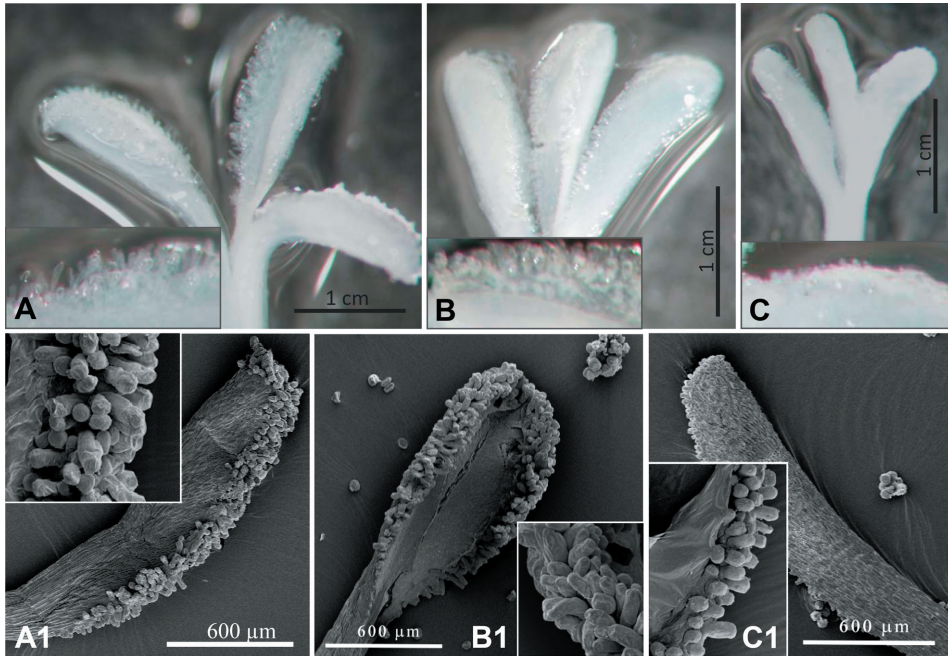
Taxon*	Locality	Latitude Longitude	cpDNA region					nrDNA region
			<i>psbA-trnH</i>	<i>rpl32-trnL</i>	<i>trnQ-rps16</i>	<i>trnL-trnF</i>	<i>trnS-trnG</i>	ITS1
<i>Gladiolus palustris</i>								
Gpa (KRAM355575)	Poland, Bystrzyca Kłodzka	[50°17'N, 16°38'E]	KM887227	–	–	–	–	–
Gpa (KRAM89824)	Poland, “Łąka Sulistrowicka” reserve, near Wrocław	50°50'N, 16°43'E	KM887228	–	–	–	–	KP027313
Gpa (KRAM93643)	France, Cranves-Sales	[46°11'N, 06°16'E]	KM887229	KM887267	KM887337	KM887308	–	–
Gpa (KRAM70642)	Austria, Moosbrunn near Wien	[48°00'N, 16°27'E]	KM887230	–	–	–	–	–
Gpa (KRA66716)	Poland, “Łąka Sulistrowicka” reserve, near Wrocław	50°50'N, 16°43'E	KM887231	KM887268	KM887338	KM887309	–	KP027314
Gpa (KRA203869)	Croatia, Istria	[45°00'N, 13°59'E]	KM887232	–	–	–	–	–
Gpa (KRA203868)	Slovenia, Julian Alps	[46°20'N, 13°44'E]	KM887233	–	–	–	–	–
Gpa (KRA272251)	Austria, Salzburg	[47°41'N, 13°08'E]	KM887234	–	–	–	–	–
Gpa (KRA125306)	Ukraina, Podolia, Dolina	[49°12'N, 25°43'E]	–	–	–	KM887310	–	–
Gpa (KRA203864)	Germany, Rhineland-Palatinate	[49°55'N, 07°27'E]	KM887235	–	–	KM887311	–	–
Gpa (KRA203865)	Croatia, Rijeka	[45°20'N, 14°27'E]	KM887236	–	–	KM887312	–	–
Gpa (WR0205)	Poland, “Łąka Sulistrowicka” reserve, near Wrocław, <i>ex situ</i> culture in the Botanical Garden of UWr	50°50'N, 16°43'E	KM887237	KM887269	KM887339	KM887300	KM887195	KP027315
Gpa (WR0206)	Poland, “Łąka Sulistrowicka” reserve, near Wrocław, <i>ex situ</i> culture in the Botanical Garden of UWr	50°50'N, 16°43'E	KM887238	KM887270	KM887340	KM887301	KM887197	KP027316
Gpa (WR0209)	Poland, “Łąka Sulistrowicka” reserve, near Wrocław, <i>ex situ</i> culture in the Botanical Garden of UWr	50°50'N, 16°43'E	KM887239	KM887271	KM887341	KM887302	KM887196	KP027317
Gpa (WR0211)	Poland, “Łąka Sulistrowicka” reserve, near Wrocław, <i>ex situ</i> culture in the Botanical Garden of UWr	50°50'N, 16°43'E	KM887240	KM887272	KM887342	KM887303	KM887198	KP027318
Gpa (WR0214)	Poland, “Łąka Sulistrowicka” reserve, near Wrocław, <i>ex situ</i> culture in the Botanical Garden of UWr	50°50'N, 16°43'E	KM887241	KM887273	KM887343	KM887304	KM887199	KP027319

Gpa (WR0219)	Poland, "Łąka Sulistrowicka" reserve, near Wrocław, <i>ex situ</i> culture in the Botanical Garden of UWr	50°50'N, 16°43'E	KM887242	KM887274	KM887344	KM887305	KM887200	KP027320
Gpa (WR0401)	Germany, Landkreis Konstanz, "Wollmatinger Ried" reserve, <i>ex situ</i> culture in the Botanical Garden of UWr	47°41'N, 09°07'E	KM887243	KM887275	KM887345	KM887306	KM887201	KP027321
Gpa (WR0402)	Germany, Landkreis Konstanz, "Wollmatinger Ried" reserve, <i>ex situ</i> culture in the Botanical Garden of UWr	47°41'N, 09°07'E	KM887244	KM887276	KM887346	KM887307	KM887202	KP027322
<i>Gladiolus imbricatus</i>								
Gim (KRAM507459)	Poland, Zielona near Opole	[50°36'N, 18°19'E]	KM887210	KM887253	KM887322	–	–	–
Gim (KRAM509890)	Poland, Włodowice near Zawiercie	[50°33'N, 19°26'E]	KM887211	KM887254	KM887323	KM887285	KM887188	–
Gim (KRAM407304)	Poland, Dachnów near Lubaczów	[50°12'N, 23°06'E]	KM887212	KM887255	KM887324	KM887286	–	–
Gim (KRAM223230)	Poland, Beskid Mały Mts, Mt. Leskowiec	[49°47'N, 19°26'E]	KM887213	KM887256	KM887325	KM887287	–	–
Gim (KRAM91631)	Poland, Podhale, on the Leśnica river, between Ostrowsko and Gronków	[49°27'N, 20°06'E]	KM887214	KM887257	–	KM887288	–	KP027307
Gim (KRAM75731)	Poland, Kąty - Bednarze	[52°28'N, 21°45'E]	KM887215	KM887258	KM887326	KM887289	–	KP027308
Gim (KRAM58475)	Poland, "Świnia Góra" reserve near Kielce	[51°03'N, 20°41'E]	KM887216	KM887259	KM887327	KM887290	KM887189	–
Gim (KRAM63854)	Poland, Zakrzów Kotowice near Wrocław	[51°13'N, 16°55'E]	KM887217	–	KM887328	KM887291	–	–
Gim (KRAM231226)	Poland, Pieniny Mts, Pieniński Pas Skałkowy	[49°25'N, 20°28'E]	KM887218	KM887260	KM887329	KM887292	–	–
Gim (KRAM75235)	Poland, Białowieża	[52°43'N, 23°51'E]	KM887219	–	KM887330	KM887293	–	–
Gim (KRAM296564)	Poland, "Łąka Sulistrowicka" reserve, near Wrocław	50°50'N, 16°43'E	KM887220	KM887261	KM887331	KM887294	KM887190	KP027306
Gim (KRAM228124)	Ukraine, Novhorod-Siverskyi	[51°59'N, 33°16'E]	KM887221	–	–	–	–	–
Gim (KRAM217157)	Romania, Dofteana	[46°20'N, 26°32'E]	KM887222	KM887262	KM887332	KM887295	–	–
Gim (WR0301)	Czech Republic, southern Moravia, <i>ex situ</i> culture in the Botanical Garden of UWr	–	KM887223	KM887263	KM887333	KM887296	KM887191	KP027312
Gim (K-6)	Poland, Kraków - Kostrze, Koło Tynieckie	50°01'N, 19°49'E	KM887224	KM887264	KM887334	KM887297	KM887192	KP027311
Gim (Pp-6)	Poland, Beskid Żywiecki Mts, Pod Polankami	49°40'N, 19°25'E	KM887225	KM887265	KM887335	KM887298	KM887193	KP027309
Gim (Prz-6)	Poland, Beskid Mały Mts, Przy Pustelnikach	49°49'N, 19°26'E	KM887226	KM887266	KM887336	KM887299	KM887194	KP027310
<i>Gladiolus ×sulistrovicus</i>								
Gim-Gpa (WR0101)	Poland, "Łąka Sulistrowicka" reserve, near	50°50'N, 16°43'E	KM887245	KM887277	KM887347	KM887313	KM887203	KP027323

	Wrocław, <i>ex situ</i> culture in the Botanical Garden of UWr								
Gim-Gpa (WR0105)	Poland, "Łąka Sulistrowicka" reserve, near Wrocław, <i>ex situ</i> culture in the Botanical Garden of UWr	50°50'N, 16°43'E	KM887246	KM887278	KM887348	KM887314	KM887204	KP027324	
Gim-Gpa (WR0107)	Poland, "Łąka Sulistrowicka" reserve, near Wrocław, <i>ex situ</i> culture in the Botanical Garden of UWr	50°50'N, 16°43'E	KM887247	KM887279	KM887349	KM887315	KM887205	KP027325	
Gim-Gpa (WR0115)	Poland, "Łąka Sulistrowicka" reserve, near Wrocław, <i>ex situ</i> culture in the Botanical Garden of UWr	50°50'N, 16°43'E	KM887248	KM887280	KM887350	KM887316	KM887206	KP027326	
Gim-Gpa (WR0505)	Poland, "Łąka Sulistrowicka" reserve, near Wrocław, <i>ex situ</i> culture in the Botanical Garden of UWr	50°50'N, 16°43'E	KM887249	KM887281	KM887351	KM887317	KM887207	KP027328	
Gim-Gpa (WR0506)	Poland, "Łąka Sulistrowicka" reserve, near Wrocław, <i>ex situ</i> culture in the Botanical Garden of UWr	50°50'N, 16°43'E	KM887250	KM887282	KM887352	KM887318	KM887208	–	
Gim-Gpa (WR0601)	Poland, "Łąka Sulistrowicka" reserve, near Wrocław, <i>ex situ</i> culture in the Botanical Garden of UWr	50°50'N, 16°43'E	KM887251	KM887283	KM887353	KM887319	KM887209	KP027327	
<i>Gladiolus illyricus</i>									
Gil (KRAM56021)	Spain, El Rocio	[37°08'N, 06°28'W]	KM887252	KM887284	KM887354	KM887320	–	–	



Electronic Appendix 2. – Pollen viability of *Gladiolus palustris* (A), *G. imbricatus* (C) and their hybrid *G. xsulistrovicus* (B); viable pollen grains stained red, nonviable pollen grains are green – optical microscope micrographs. The mean values of the viability and size of pollen grains of the taxa are given in Table 1. The shape of dry and hydrated pollen grains of *G. palustris* (A1, A2), *G. imbricatus* (C1, C2) and *G. xsulistrovicus* (B1, B2) – scanning electron micrographs (SEM). Verrucate exine microstructure of pollen grains of *G. palustris* (A3), *G. imbricatus* (C3) and *G. xsulistrovicus* (B3) – SEM.



Electronic Appendix 3. – The stigma microstructure of *Gladiolus palustris* (A, A1), *G. imbricatus* (C, C1) and their hybrid *G. ×sulistrovicus* (B, B1); A–C: optical microscope micrographs; A1–C1: scanning electron micrographs (SEM).