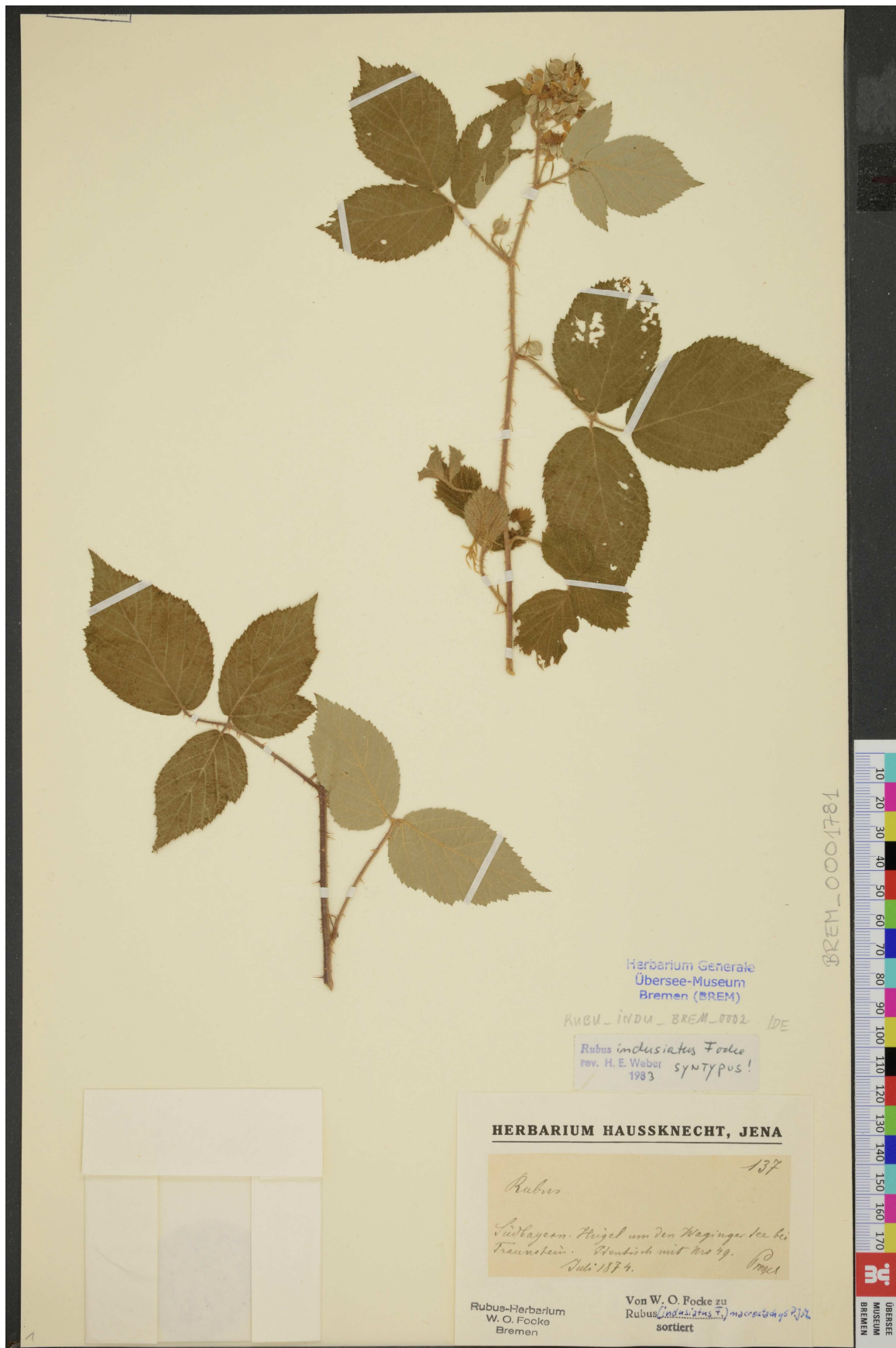


**Trávníček B., Lepší M., Lepší P. & Žíla V. (2018): Taxonomy of *Rubus* ser. *Radula* in the Czech Republic. – Preslia 90: 387–424**

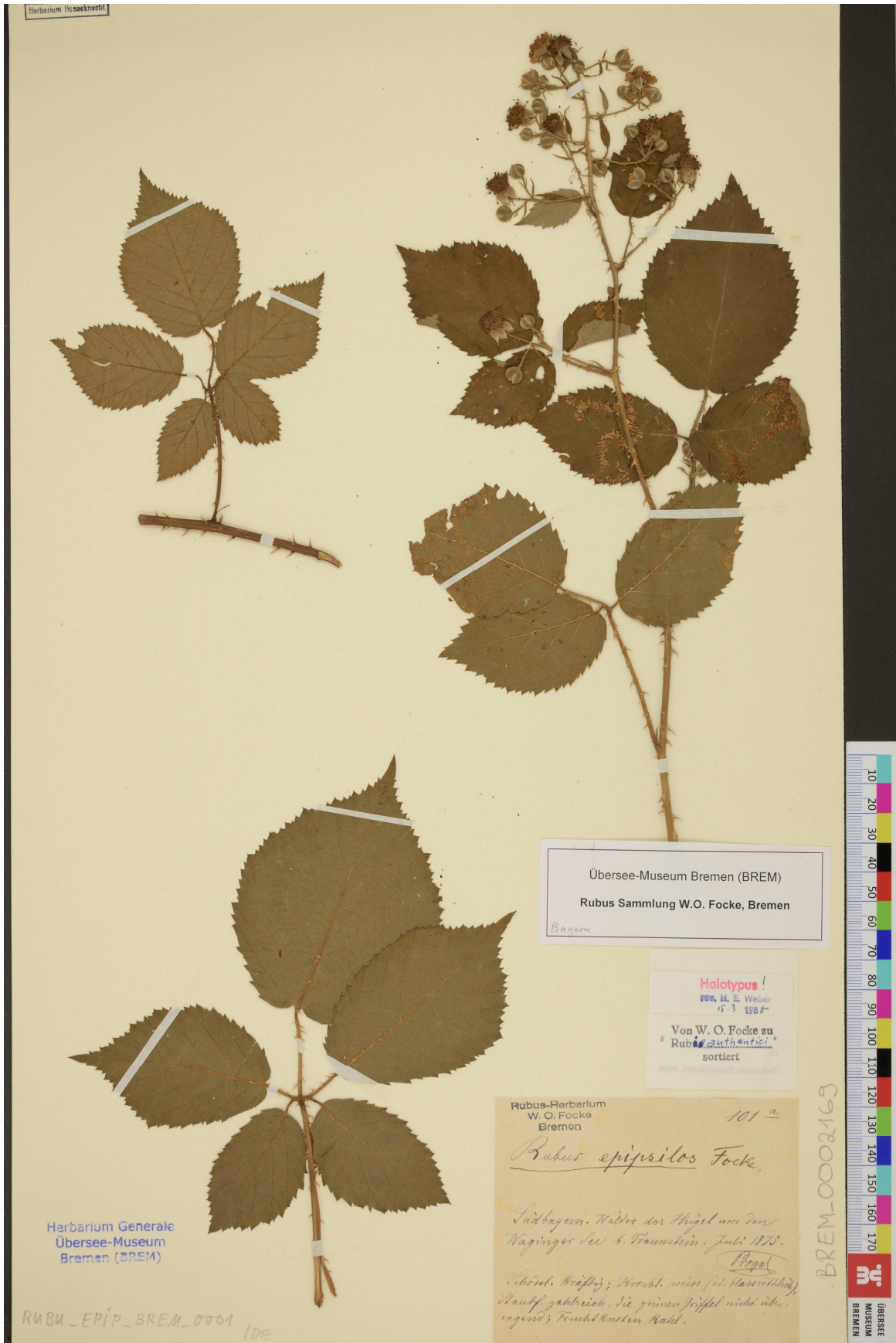
**Electronic Appendix 2. – Type material of *Rubus* ser. *Radula* deposited in BREM and KIEL.**



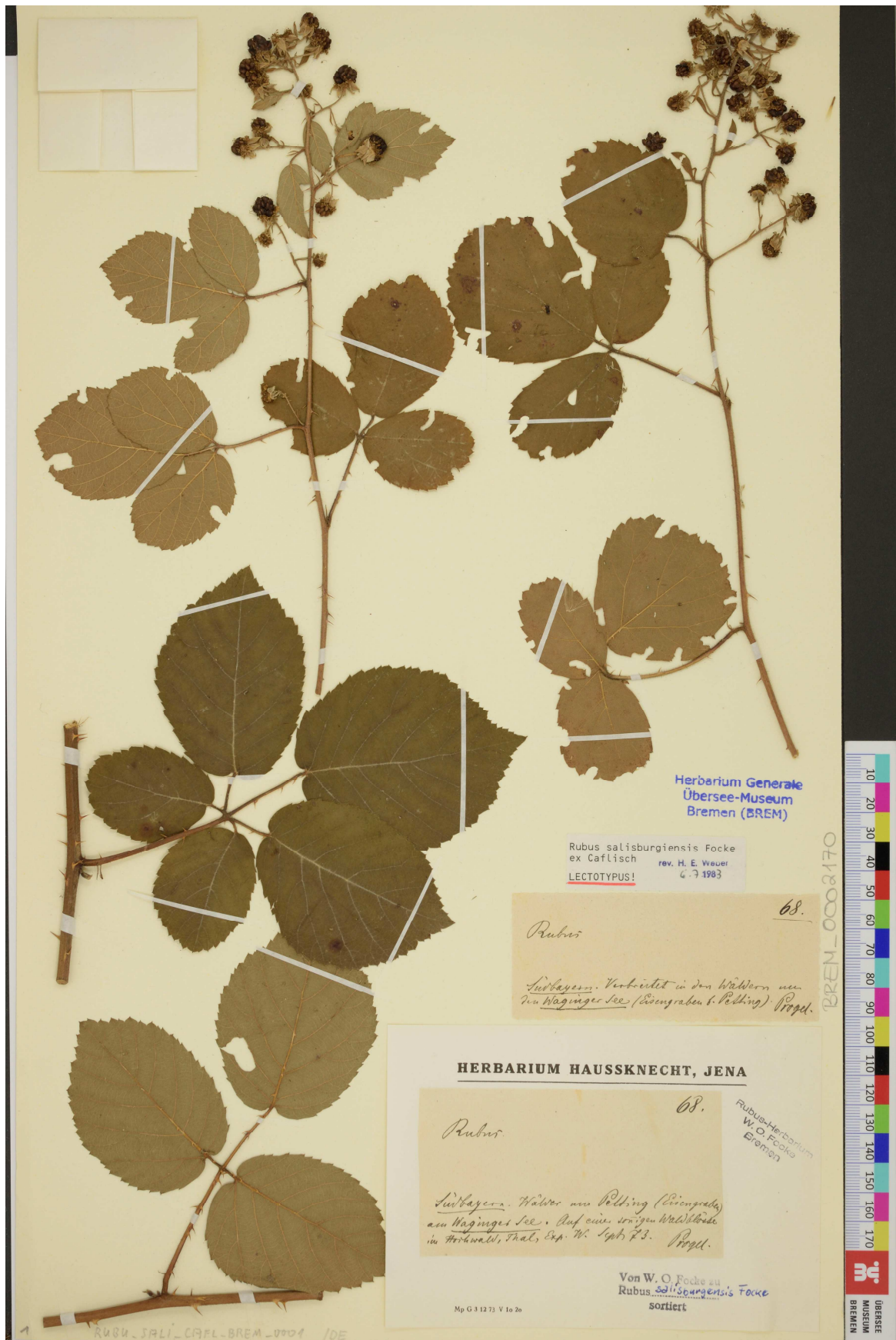
Isolectotype of *Rubus indusiatus* Focke deposited in the herbarium of Übersee-Museum Bremen, No. BREM\_0001780 (Photo by M. Grein, Übersee-Museum Bremen, 2018).



Paralectotype of *Rubus indusiatus* Focke deposited in the herbarium of Übersee-Museum Bremen, No. BREM\_0001781 (Photo by M. Grein, Übersee-Museum Bremen, 2018).



Lectotype of *Rubus epipsilos* Focke deposited in the herbarium of Übersee-Museum Bremen, No. BREM\_0002169 (Photo by M. Grein, Übersee-Museum Bremen, 2018).



Lectotype of *Rubus salisburgensis* Caflisch deposited in the herbarium of Übersee-Museum Bremen, No. BREM\_0002170 (Photo by M. Grein, Übersee-Museum Bremen, 2018).



Part 1 of lectotype of *Rubus rudis* Weihe deposited in the herbarium of Übersee-Museum Bremen, No. BREM\_0002171-001 (Photo by M. Grein, Übersee-Museum Bremen, 2018).



Part 2 of lectotype of *Rubus rudis* Weihe deposited in the herbarium of Übersee-Museum Bremen, No. BREM\_0002171-002 (Photo by M. Grein, Übersee-Museum Bremen, 2018).



Lectotype of *Rubus radula* Weihe deposited in the herbarium of Botanischer Garten der Christian-Albrechts-Universität zu Kiel, KIEL (Photo by M. Nickol, 2018).