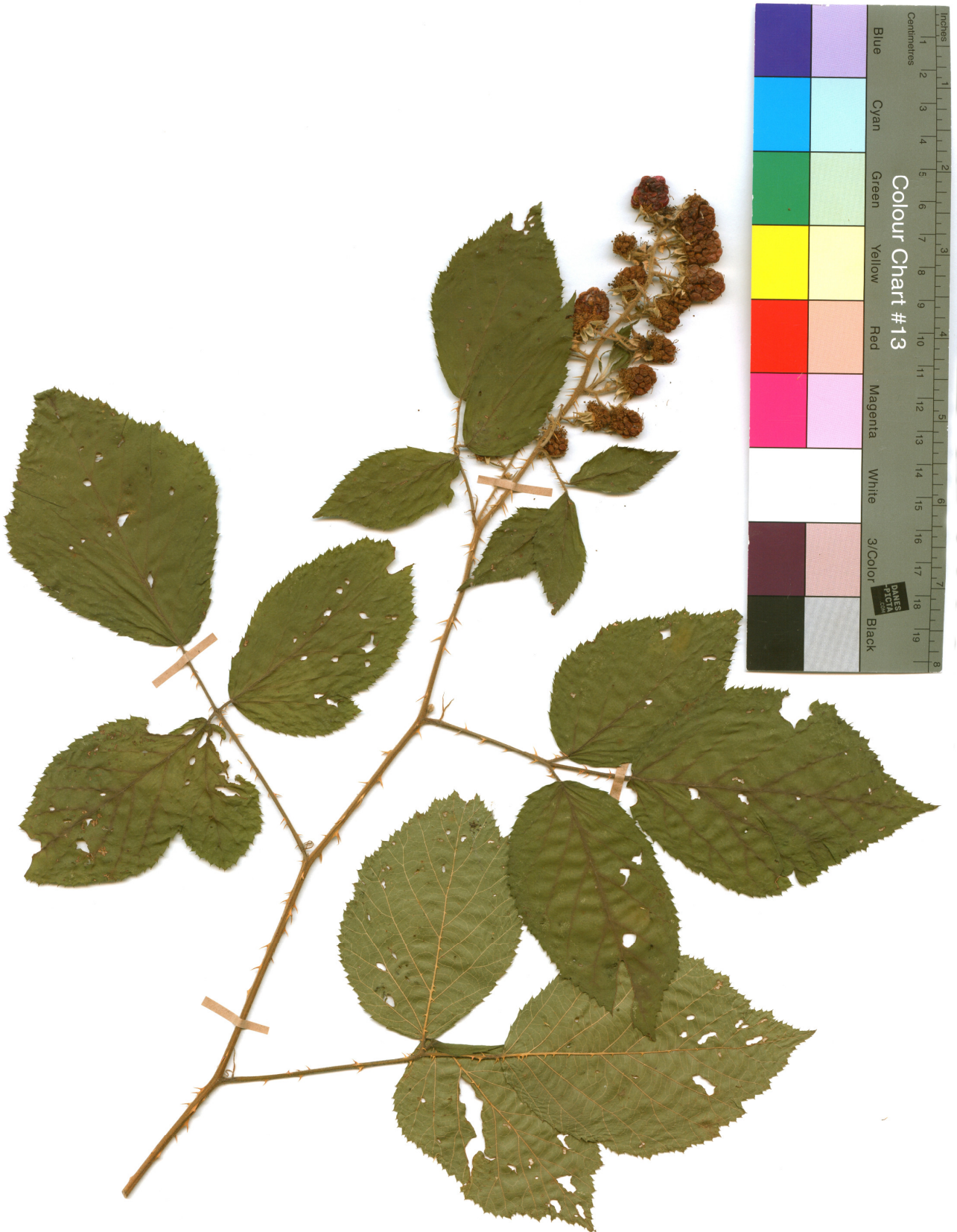
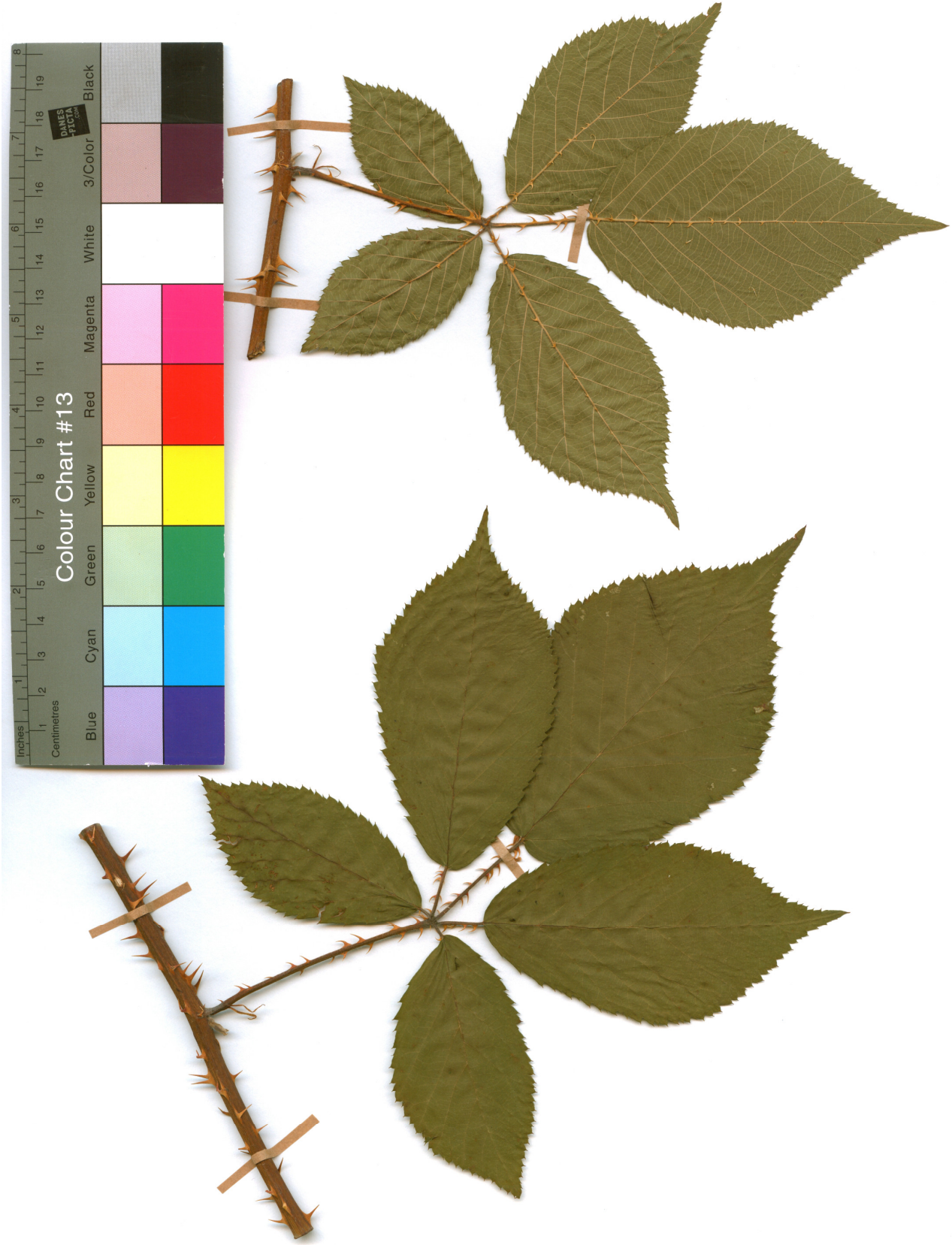


**Electronic Appendix 3.** Photographs of typical herbarium specimens for representatives of *Rubus* sect. *Rubus* ser. *Sylvatici* in the study area.

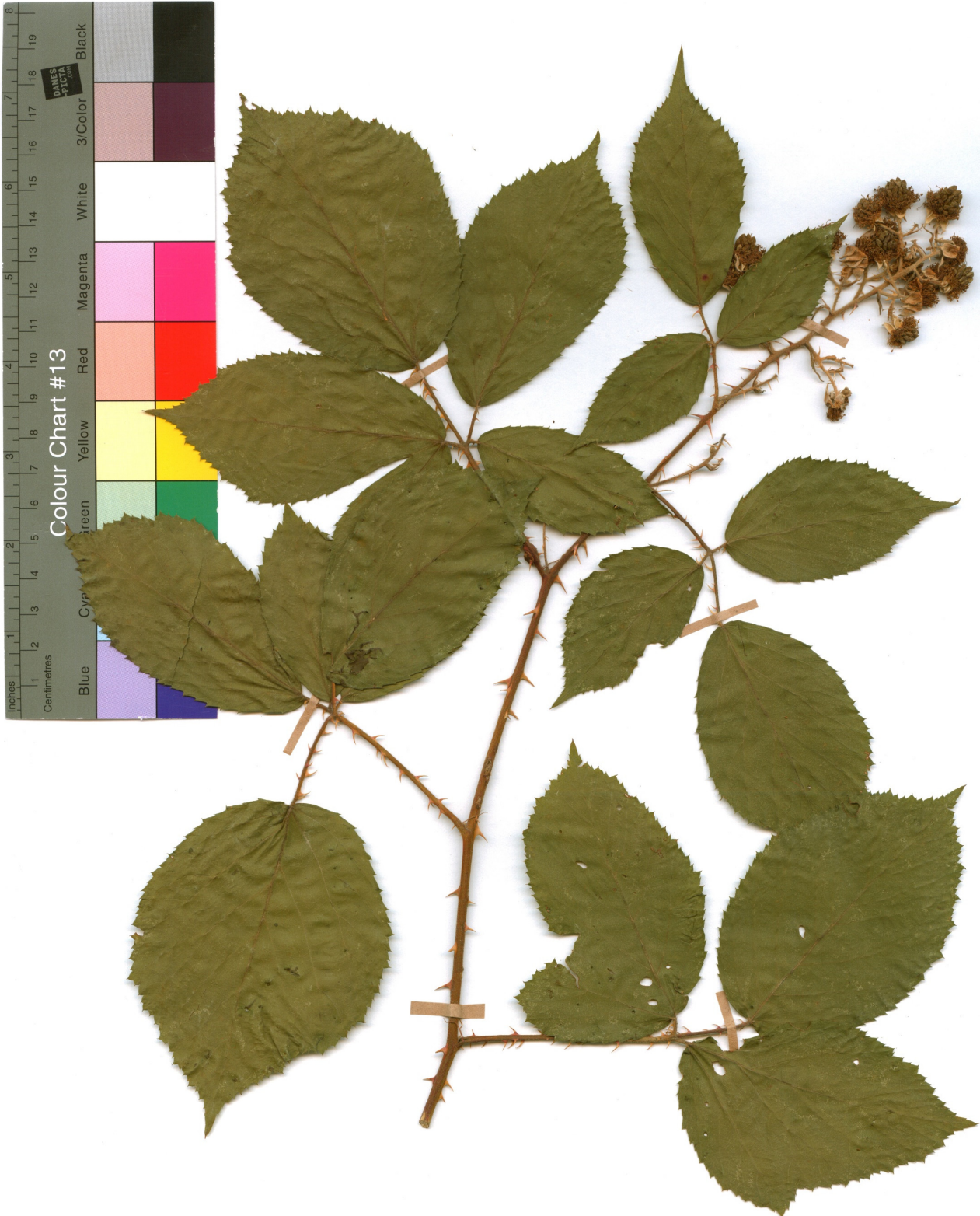
*Rubus ferox* Vest – Austria: Tobelbad village (SSW from Graz town), clearings in forest near E village margin; 410 m a.s.l.; 46°58'43"N, 15°22'16"E; 6 VIII 2013; OL (leg. B. Trávníček) – Part 1



*Rubus ferox* Vest – Austria: Tobelbad village (SSW from Graz town), clearings in forest near E village margin; 410 m a.s.l.; 46°58'43"N, 15°22'16"E; 6 VIII 2013; OL (leg. B. Trávníček) – Part 2



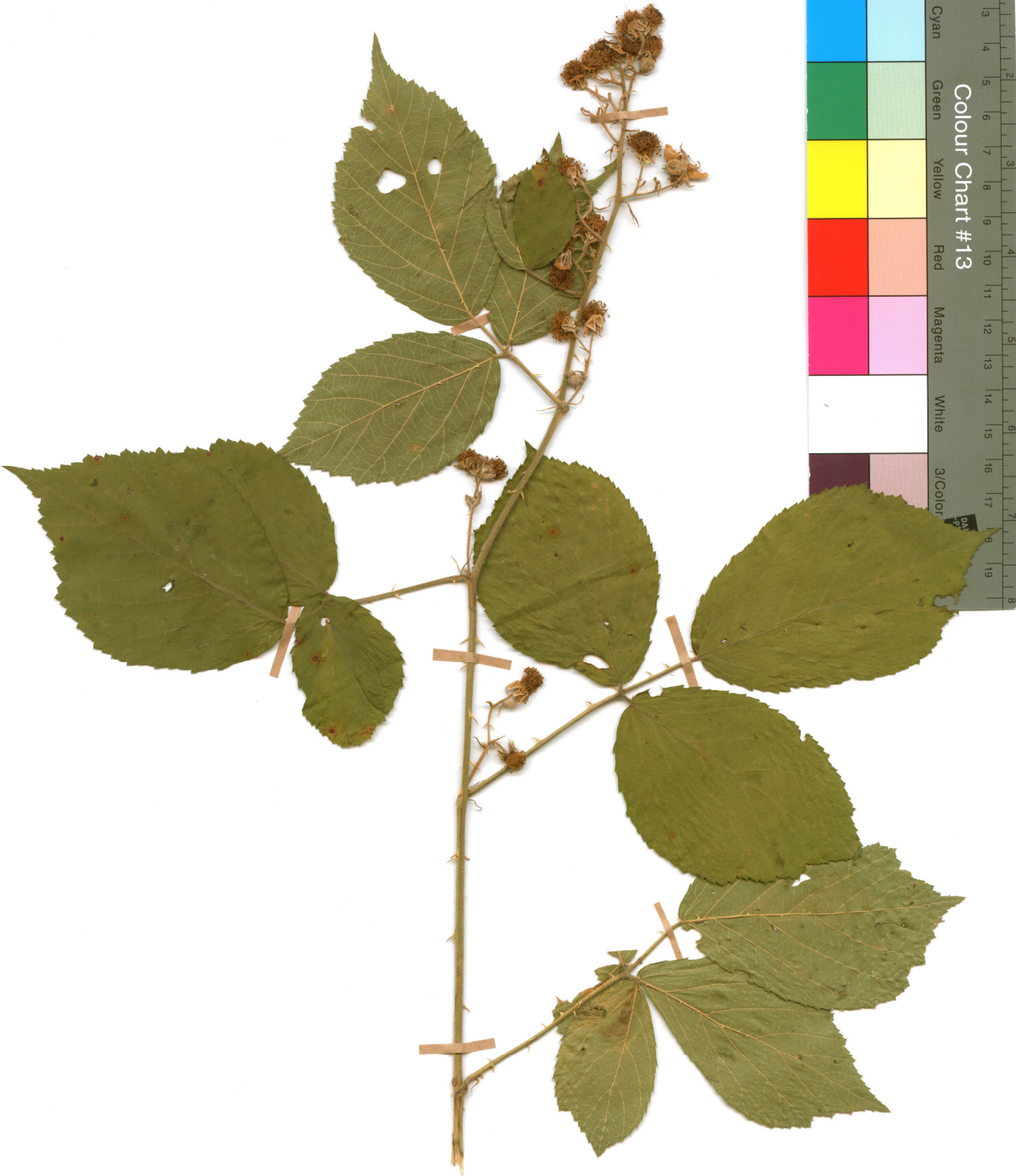
*Rubus juennensis* Leute & W. Maurer – Austria: Ruckersdorf village (ESE from Klagenfurt town), forest margin at road ca 1 km E (-ENE) from the village; 540 m a.s.l.; 46°33'57"N, 14°34'48"E; locus classicus! 5 VIII 2013; OL (leg. B. Trávníček) – Part 1



*Rubus juennensis* Leute & W. Maurer – Austria: Ruckersdorf village (ESE from Klagenfurt town), forest margin at road ca 1 km E (-ENE) from the village; 540 m a.s.l.; 46°33'57"N, 14°34'48"E; locus classicus! 5 VIII 2013; OL (leg. B. Trávníček) – Part 2



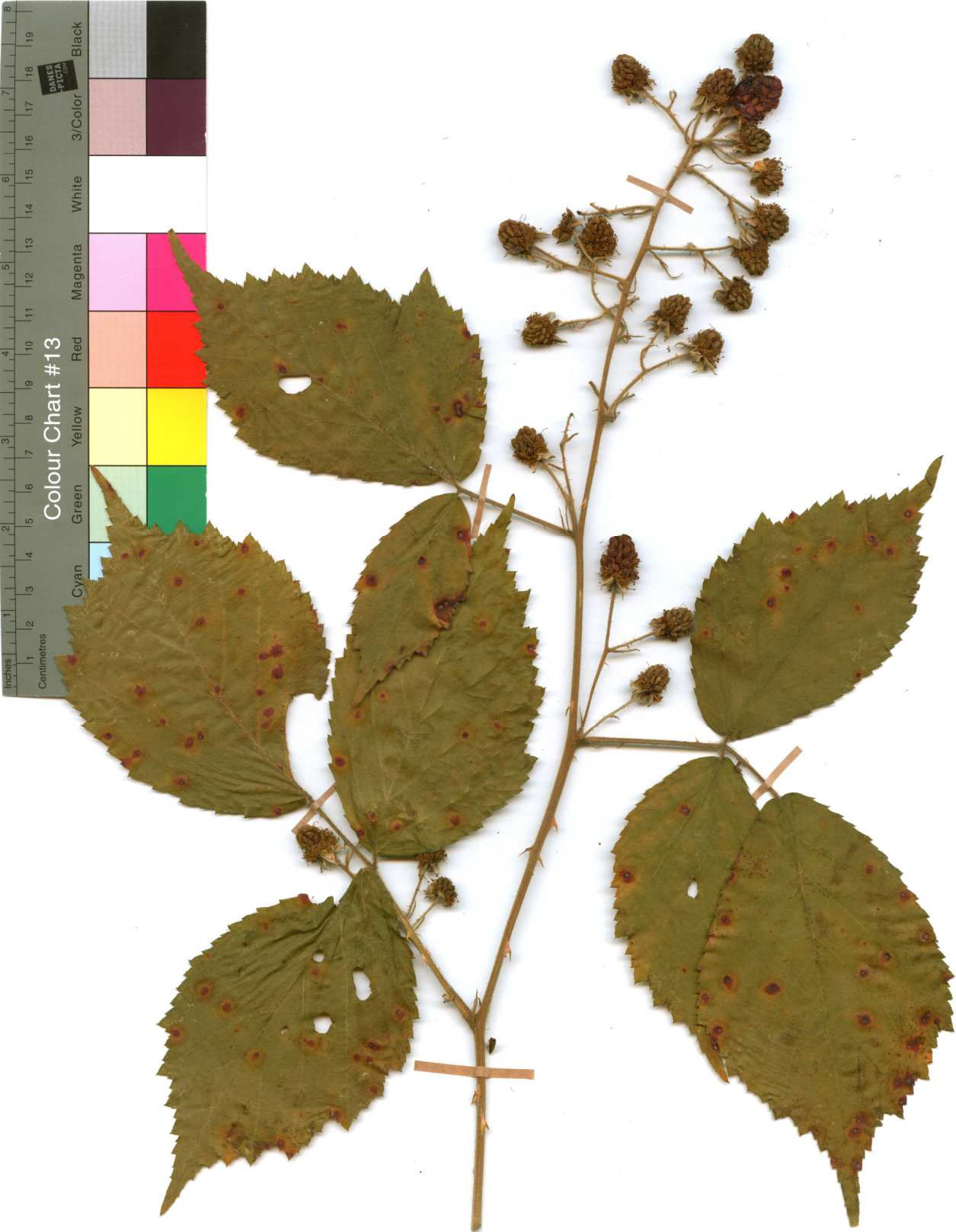
*Rubus macrophyllus* Weihe & Nees – Hungary: Várköly, 3.4 km SW from the village at "Fagyoskereszt"; 255 m a.s.l.; 46°50'24"N, 17°15'59"E; 7 VII 2012; OL (leg. B. Trávníček) – Part 1



*Rubus macrophyllus* Weihe & Nees – Hungary: Várköly, 3.4 km SW from the village at "Fagyoskereszt"; 255 m a.s.l.; 46°50'24"N, 17°15'59"E; 7 VII 2012; OL (leg. B. Trávníček) – Part 2



*Rubus salzmannii* W. Maurer – Austria: Glatzau village (SE from Graz town), margin of wood at the road towards Kirchbach in Steiermark village (N from the village); 335 m a.s.l.; 46°55'09"N, 15°40'14"E; locus classicus! 5 VIII 2013; OL (leg. B. Trávníček) – Part 1

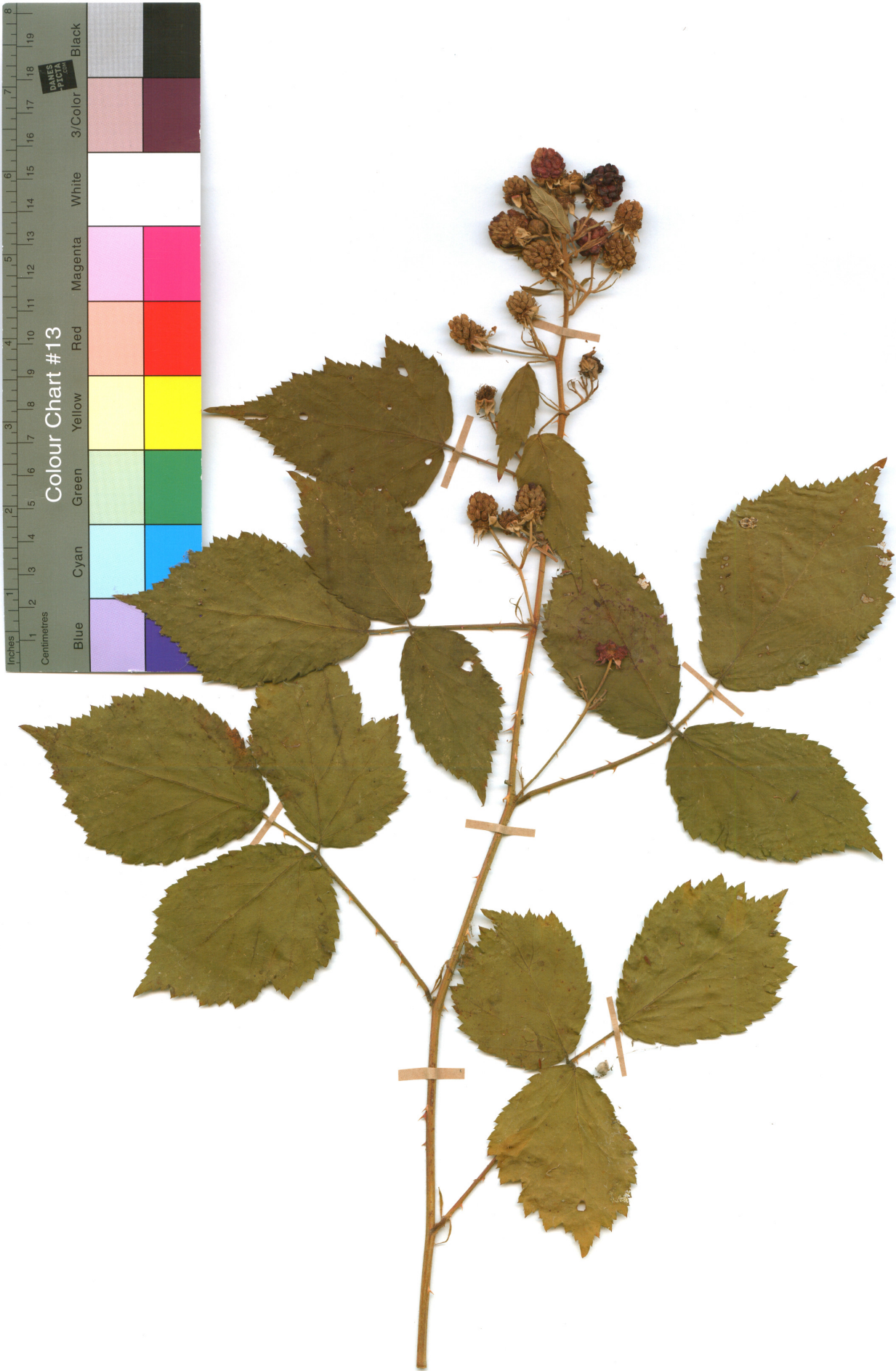


*Rubus salzmannii* W. Maurer – Austria: Glatzau village (SE from Graz town), margin of wood at the road towards Kirchbach in Steiermark village (N from the village); 335 m a.s.l.; 46°55'09"N, 15°40'14"E; locus classicus! 5 VIII 2013; OL (leg. B. Trávníček) – Part 2

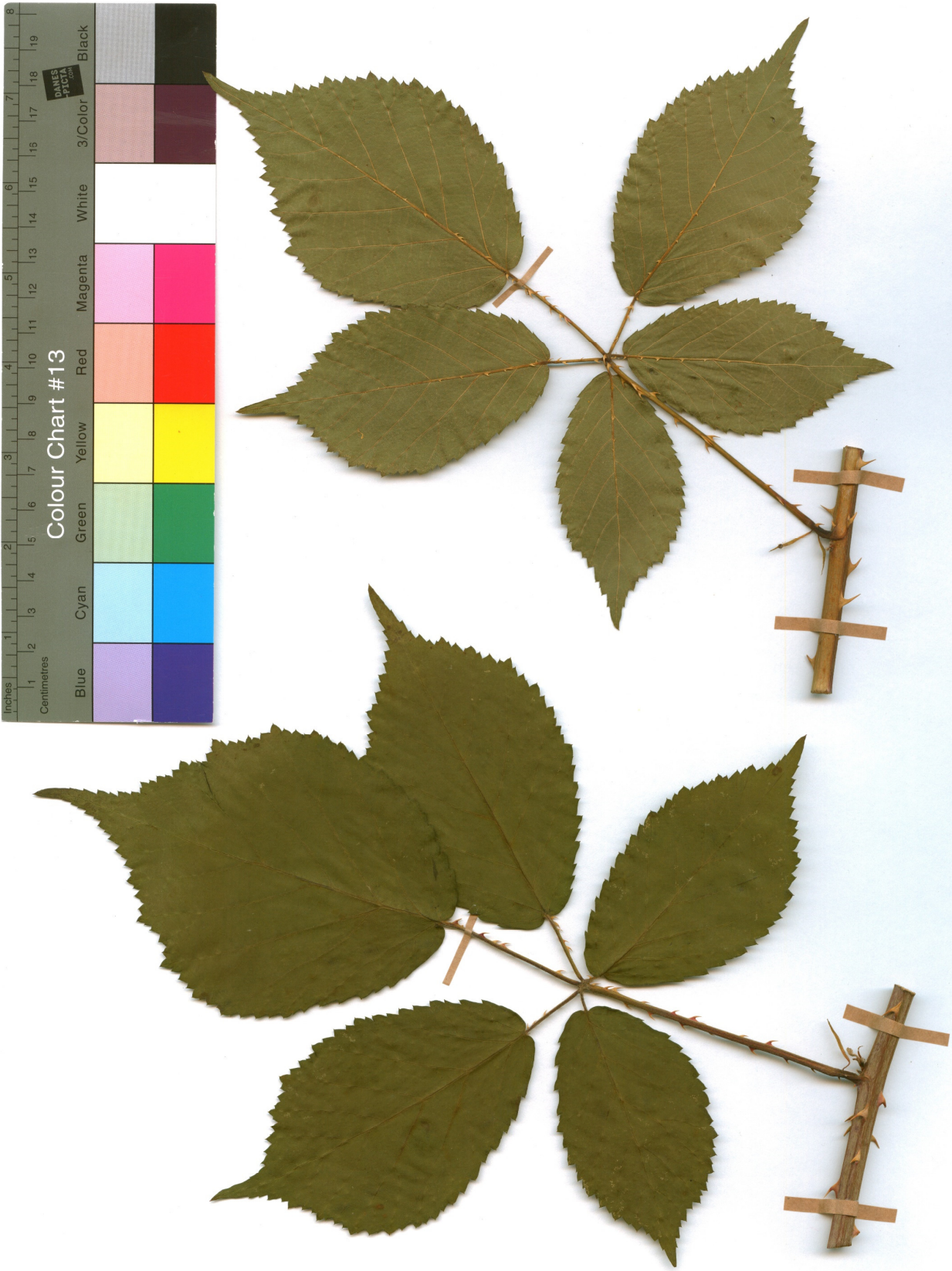




*Rubus venosus* W. Maurer – Austria: Oisnitz village (SSW from Graz town), clearing in wood at road ca 1 km N (-NNE) from railway station; 350 m a.s.l.; 46°55'23"N, 15°21'21"E; locus classicus! 5 VIII 2013; OL (leg. B. Trávníček) – Part 1



*Rubus venosus* W. Maurer – Austria: Oisnitz village (SSW from Graz town), clearing in wood at road ca 1 km N (-NNE) from railway station; 350 m a.s.l.; 46°55'23"N, 15°21'21"E; locus classicus! 5 VIII 2013; OL (leg. B. Trávníček) – Part 2



*Rubus wimmerianus* (Sprib. ex Sudre) Sprib. – Czech Republic: Veliková village (near Zlín town), forest margin at the NE margin of the village; 410 m a.s.l.; 49°17'19"N, 17°45'47"E; 14 VIII 1995; OL (leg. B. Trávníček) – Part 1



*Rubus wimmerianus* (Sprib. ex Sudre) Sprib. – Czech Republic: Veliková village (near Zlín town), forest margin at the NE margin of the village; 410 m a.s.l.; 49°17'19"N, 17°45'47"E; 14 VIII 1995; OL (leg. B. Trávníček) – Part 2

