

Koopman J., Kalinowski P., Stech M. & Więclaw H. (2019) *Carex xkneuckeri*, a hybrid new for central Europe and neotypification of this name. – Preslia 91: 161–177.

Electronic Appendix 1. – Specimens included in the molecular analysis

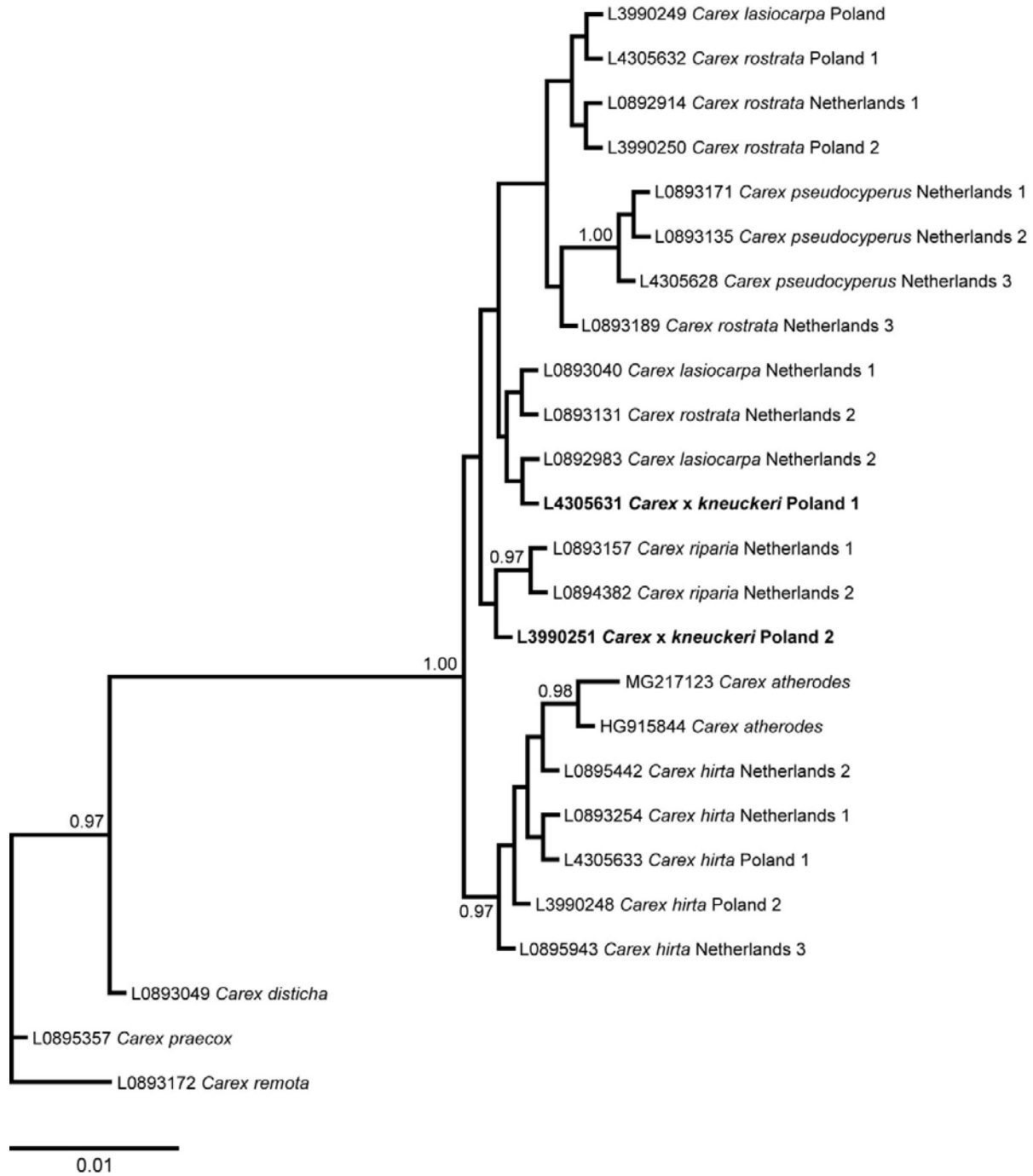
Taxon	Geographic origin	Herbarium no.	Voucher no.	DNA extract no.	BOLD sequence page	GenBank acc. no. <i>matK</i>	GenBank acc. no. ITS
<i>Carex atherodes</i>	Canada	?	CCDB-21244-A02	?	--	MG217123	--
<i>Carex atherodes</i>	USA, Alaska	?	Giger s.n.	?	--	HG915844	HG915799
<i>Carex disticha</i>	Netherlands	L0893049	Weeda 115	e25919832	NLFLM184-12	--	--
<i>Carex hirta</i>	Netherlands	L0893254	Weeda s.n.	e25921188	NLFLM319-12	--	--
<i>Carex hirta</i>	Netherlands	L0895442	Buiten s.n.	e4007589523	NLFLM3064-16	--	--
<i>Carex hirta</i>	Netherlands	L0895943	Toetenel s.n.	e4003828069	NLFLM3546-16	--	--
<i>Carex hirta</i>	Poland	L4305633	Kalinowski et al. s.n.	e4012528223	--	MK397942	MK397968
<i>Carex hirta</i>	Poland	L3990248	Więclaw et al. s.n.	Ch2	--	MK397935	MK397943
<i>Carex lasiocarpa</i>	Netherlands	L0892983	Weeda 23	e25919964	NLFLM118-12	--	--
<i>Carex lasiocarpa</i>	Netherlands	L0893040	Weeda 106	e25919928	NLFLM175-12	--	--
<i>Carex lasiocarpa</i>	Poland	L3990249	Więclaw et al. s.n.	Cl2	--	MK397936	MK397944
<i>Carex praecox</i>	Netherlands	L0895357	van Beusekom s.n.	e4007589464	NLFLM2984-16	--	--
<i>Carex pseudocyperus</i>	Netherlands	L0893135	Weeda s.n.	e25919874	NLFLM200-12	--	--
<i>Carex pseudocyperus</i>	Netherlands	L0893171	Weeda s.n.	e25918203	NLFLM236-12	--	--
<i>Carex pseudocyperus</i>	Netherlands	L4305628	Waller s.n.	e4012528218	--	MK397939	MK397957
<i>Carex remota</i>	Netherlands	L0893172	Weeda s.n.	e25919917	NLFLM237-12	--	--
<i>Carex riparia</i>	Netherlands	L0893157	Weeda s.n.	e25921174	NLFLM222-12	--	--
<i>Carex riparia</i>	Netherlands	L0894382	Fortuin s.n.	e4003828030	NLFLM2046-16	--	--
<i>Carex rostrata</i>	Netherlands	L0892914	Weeda 75	e25921235	NLFLM074-12	--	--
<i>Carex rostrata</i>	Netherlands	L0893131	Weeda s.n.	e25919904	NLFLM196-12	--	--
<i>Carex rostrata</i>	Netherlands	L0893189	Weeda s.n.	e25921177	NLFLM254-12	--	--
<i>Carex rostrata</i>	Poland	L4305632	Kalinowski et al. s.n.	e4012528222	--	MK397941	MK397967
<i>Carex rostrata</i>	Poland	L3990250	Więclaw et al. s.n.	Cr2	--	MK397937	MK397945
<i>Carex x kneuckeri</i>	Poland	L4305631	Kalinowski et al. s.n.	e4012528221	--	MK397940	MK397958
clone c2						--	MK397959
clone c3						--	MK397960
clone c4						--	MK397961
clone c6						--	MK397962
clone c7						--	MK397963
clone c8						--	MK397964
clone c9						--	MK397965
clone c10						--	MK397966
<i>Carex x kneuckeri</i>	Poland	L3990251	Więclaw et al. s.n.	Cxk2	--	MK397938	MK397946

clone c1	--	MK397947
clone c2	--	MK397948
clone c3	--	MK397949
clone c4	--	MK397950
clone c5	--	MK397951
clone c6	--	MK397952
clone c7	--	MK397953
clone c8	--	MK397954
clone c9	--	MK397955
clone c10	--	MK397956

Electronic Appendix 2. – Relevés with *Carex ×kneuckeri* (SE Poland, Lubelskie Province, county and municipality of Chełm, west of the village Nowosiółki)

Date	1 July 2016	17 June 2017
Area (m ²)	25	25
Water level (cm)	15-20	-
Cover of moss layer (%)	70	90
Cover of herb layer (%)	40	90
Number of species	21	29
<i>Carex ×kneuckeri</i>	2	3
<i>Molinio-Arrhenathetetea</i>		
<i>Juncus inflexus</i>	1	1
<i>Equisetum palustre</i>	+	2
<i>Caltha palustris</i>	1	+
<i>Cardamine pratensis</i>	+	2
<i>Carex cespitosa</i>		1
<i>Ranunculus repens</i>	+	+
<i>Rumex crispus</i>	+	r
<i>Agrostis stolonifera</i>	+	+
<i>Ranunculus acris</i>	+	
<i>Carex hirta</i>	+	+
<i>Epilobium hirsutum</i>		+
<i>Lysimachia vulgaris</i>		+
<i>Myosotis palustris</i>		+
<i>Festuca rubra</i>		r
<i>Potentilla anserina</i>		r
<i>Lychnis flos-cuculi</i>		r
<i>Phragmito-Magnocaricetea</i>		
<i>Equisetum fluviatile</i>	+	1
<i>Carex acuta</i>	2	
<i>Carex rostrata</i>	+	1
<i>Lycopus europaeus</i>	+	+
<i>Lythrum salicaria</i>	+	+
<i>Alisma plantago-aquatica</i>	+	
<i>Eleocharis uniglumis</i>	+	
<i>Mentha aquatica</i>		+
<i>Poa palustris</i>		+
<i>Carex pseudocyperus</i>		r
<i>Galium palustre</i>		r
<i>Scheuchzerio palustris-Caricetea fuscae</i>		
<i>Carex nigra</i>		2
<i>Epilobium palustre</i>	+	+
<i>Juncus articulatus</i>	+	r
<i>Alnetea glutinosae</i>		
<i>Calliargonella cuspidata</i>	4	5
<i>Lemnetea</i>		
<i>Lemna minor</i>	+	
<i>Franguletea</i>		
<i>Salix cinerea</i>		r

Electronic Appendix 3. – The consensus tree of the Bayesian analyses – *matK*.



Electronic Appendix 4. – The consensus tree of the Bayesian analyses – ITS.

