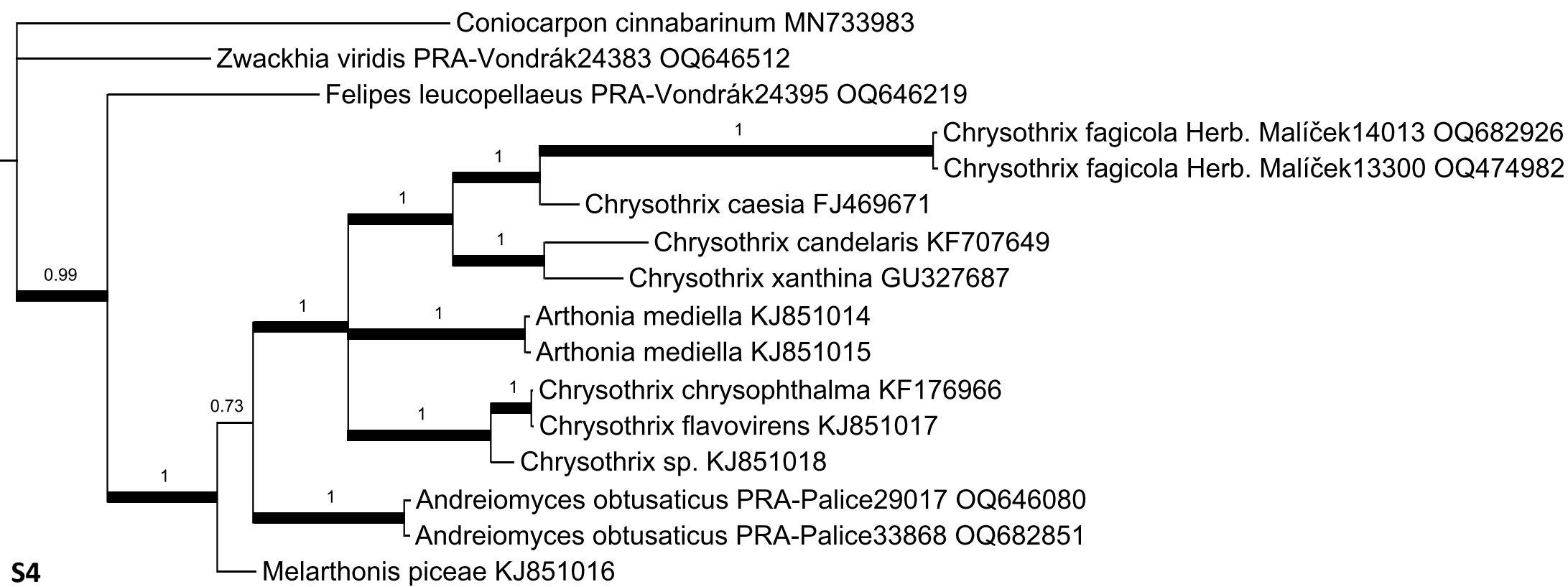


Vondrák J., Svoboda S., Košnar J., Malíček J., Šoun J., Frolov I., Svensson M., Novotný P. & Palice Z. (2023) Martin7: a reference database of DNA barcodes for European epiphytic lichens and its taxonomic implications. – *Preslia* 95: 311–345.

**Supplementary Fig. S4.** MtSSU tree with *Chrysothrix fagicola*. GTRG model with gamma distribution was used as a model of sequence evolution. Trees were constructed using Bayesian inference run for 6,000 generations.



**S4**