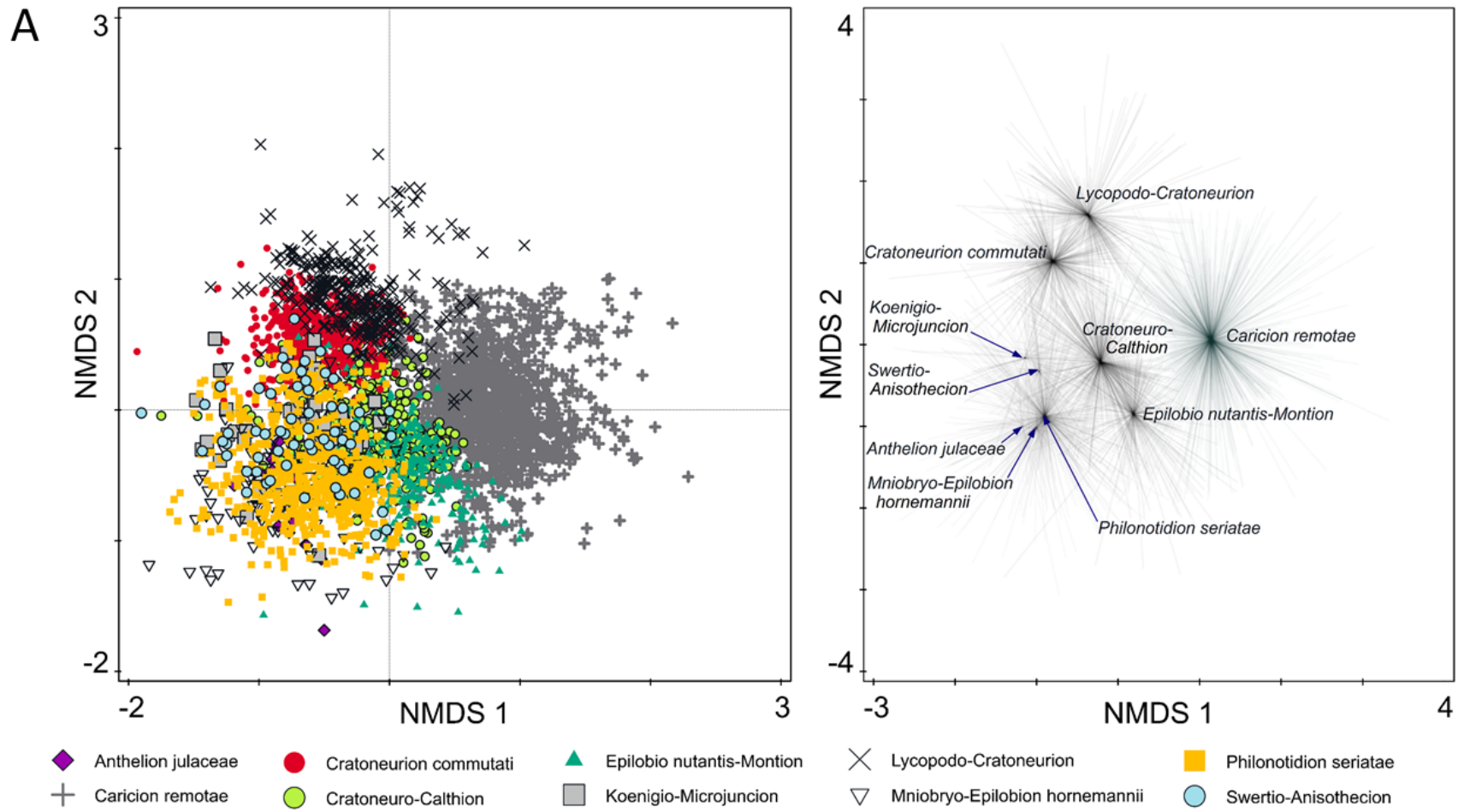
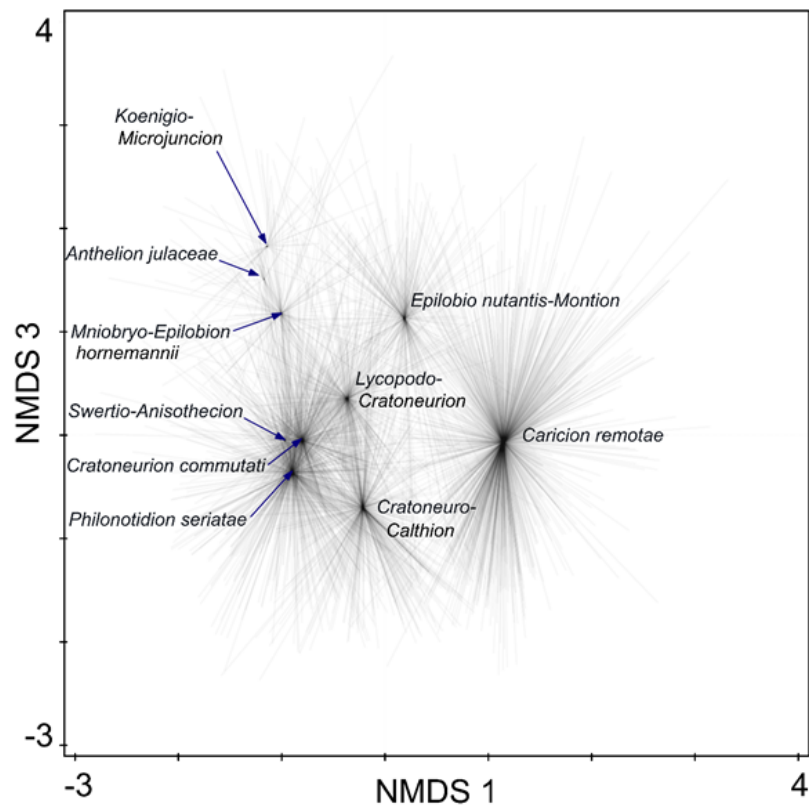
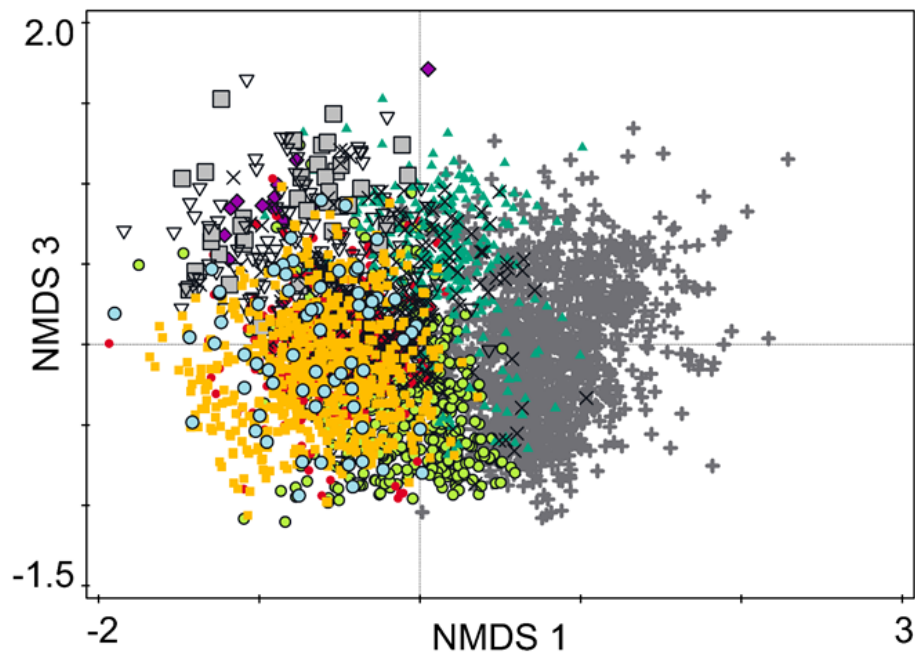


Peterka T., Hájková P., Jiroušek M., Hinterlang D., Chytrý M., Aunina L., Deme J., Lyons M., Seiler H., Zechmeister H., Apostolova I., Beierkuhnlein C., Bischof M., Biță-Nicolae C., Brancaloni L., Čušterevska R., Dengler J., Didukh Ya., Dítě D., Felbaba-Klushyna L., Garbolino E., Gerdol R., Iemelianova S., Jansen F., Juutinen R., Kamberović J., Kapfer J., Klímová B., Knollová I., Kolari T. H. M., Lazarević P., Luostarinen R., Mikulášková E., Milanović Đ., Miserere L., Moeslund J. E., Molina J. A., Pérez-Haase A., Petraglia A., Puglisi M., Ruprecht E., Šmerdová E., Spitale D., Tomaselli M., Vassilev K. & Hájek M. (2023) Formalized classification of the class *Montio-Cardaminetea* in Europe: towards a consistent typology of spring vegetation. – *Preslia* 95: 347–383.

**Supplementary Fig. S1.** NMDS ordination analysis of core and non-core vegetation plots. **A:** First and second axes. **B:** First and third axes. With respect to high number of included plots (samples), ordinations are visualised with sample symbols (left) and spider plots with alliance centroids (right).



B



- |                      |                          |                             |                                  |                          |
|----------------------|--------------------------|-----------------------------|----------------------------------|--------------------------|
| ◆ Anthelion julaceae | ● Cratoneurion commutati | ▲ Epilobio nutantis-Montion | × Lycopodo-Cratoneurion          | ■ Philonotidion seriatae |
| + Caricion remotae   | ● Cratoneuro-Calthion    | ■ Koenigio-Microjuncion     | ▽ Mniobryo-Epilobion hornemannii | ● Swertio-Anisothecion   |