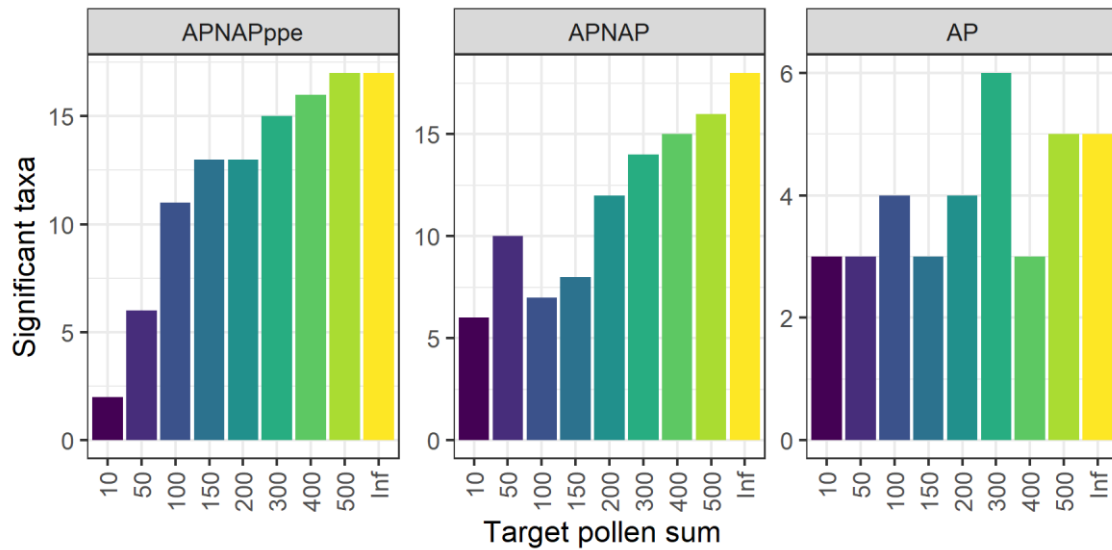


Abraham V., Macek M., Tkáč P., Novák D., Pokorný P., Kozáková R., Jamrichová E., Soukupová M. G. & Kolář J. (2023) Pollen anthropogenic indicators revisited using large-scale pollen and archaeological datasets: 12,000 years of human-vegetation interactions in central Europe. – *Preslia* 95: 385–411.



Supplementary Fig. S4. Number of significant taxa for different sums within the three scenarios of pollen counts.