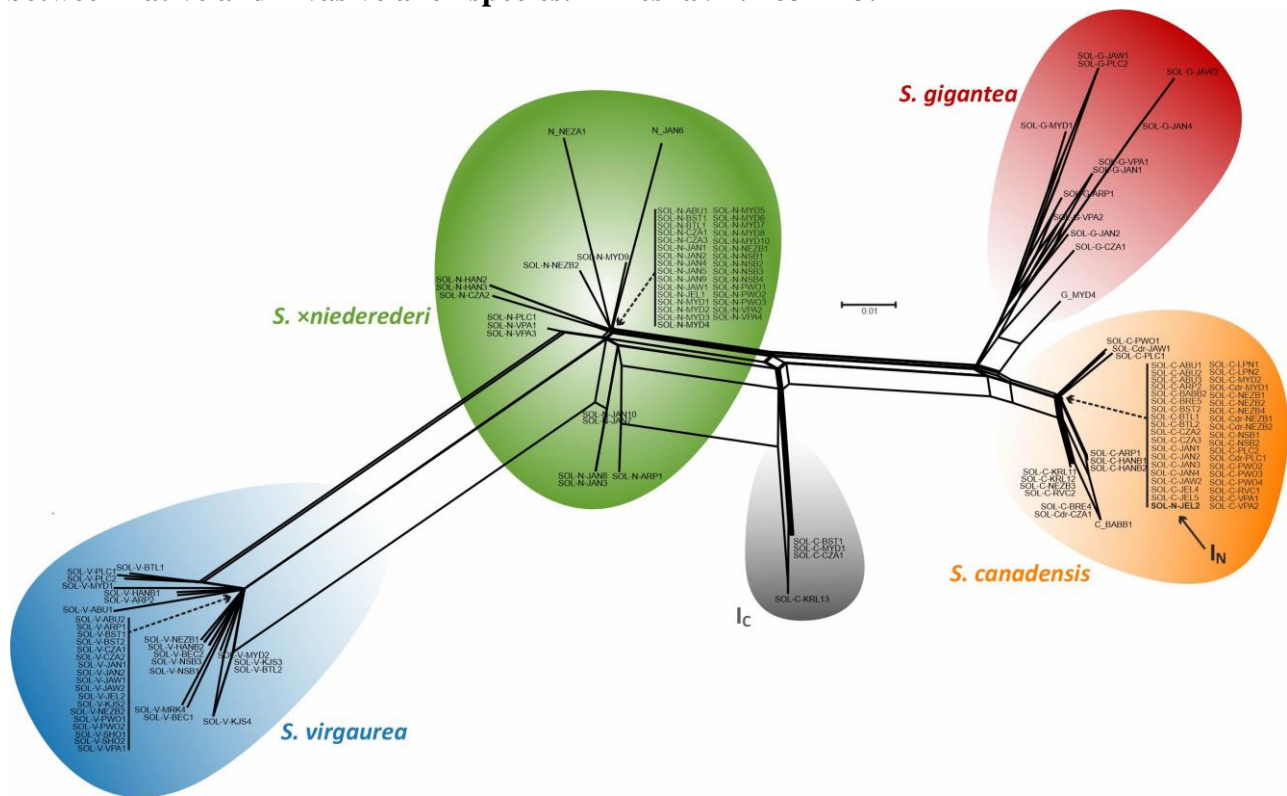


Skokanová K., Šingliarová B., Španiel S., Mered'a Jr. P., Mártonfiová L. & Zozomová-Lihová J. (2022) Relative DNA content differences reliably identify *Solidago ×niederederi*, a hybrid between native and invasive alien species. – *Preslia* 94: 183–213.



Supplementary Fig. S2. – Genetic variation of the *Solidago* taxa studied revealed by a NeighborNet network based on the ITS sequences of nrDNA. Terminal labels denote individual sequences (see population codes in Table 1). Four major groups of ribotypes are coloured according to the species assignment; *I_C*, *I_N* – supposed introgressants of *S. canadensis* and *S. ×niederederi* (see Results).