

Electronic Appendix 2. Images of type specimens of selected names in the *Rubus gothicus*-group (*Rubus* ser. *Subthyrsoidei*)

Lectotype of *Rubus gothicus* Frid. et Gelert ("Als. Mellem Sønderborg og Sønderskov", O. Gelert, 3 VIII 1882, C10021218). Reproduced with permission of the Natural History Museum of Denmark.

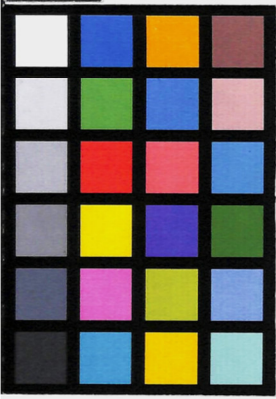


Lectotype of *Rubus subgothicus* Sprib. ("Kosel: Radoschauer Wald", F. Spribille, 7 VIII 1905, WRSL: WR SS 065046) (photo: E. Lenard)



Uniwersytet
Wrocławski
Herbarium
WRSL

0 1 2 3 4 5 6 7 8 9 10
cm
copyright reserved



Rubus subgothicus Sprib.
vidi
det. Piotr Kosiński date: June 2020

Rubus subgothicus
Sprib.
1905 22.

Provincia Libehvica.
Rubus sub-Gothicus m.
Kosel: Radoschauer Wald.
7.8.05. Spribille

5d

Herbarium WRSL
WR SS 065046

Holotype of *Rubus lobifolius* Trávn. et Király ("Czech Republic, 68. Moravské podhůří Vysočiny, distr. Blansko, Obora village, forest margin at the road towards Bořitov village, 385 m", B. Trávníček, OL 38008) – Part 1 (photo: M. Oulehlová)



Holotype of *Rubus lobifolius* Trávn. et Király ("Czech Republic, 68. Moravské podhůří Vysočiny, distr. Blansko, Obora village, forest margin at the road towards Bořitov village, 385 m", B. Trávníček, OL 38008) – Part 2 (photo: M. Oulehlová)



Holotype of *Rubus scarbantinus* Király et Trávn. ("Hungary, Győr-Moson-Sopron County, Sopron, Hidegvíz Valley, 0.3 km W-NW of the ruined "Népfőiskola", 392 m s. m., N 47°40'26", E 016°28'03" 8364bd", 7 VI 2020, leg. G. Király, OL 38010) – Part 1 (photo: M. Oulehlová)



Holotype of *Rubus scarbantinus* Király et Trávn. ("Hungary, Győr-Moson-Sopron County, Sopron, Hidegvíz Valley, 0.3 km W-NW of the ruined "Népfőiskola", 392 m s. m., N 47°40'26", E 016°28'03" 8364bd", 7 VI 2020, leg. G. Király, OL 38010) – Part 2 (photo: M. Oulehlová)

