

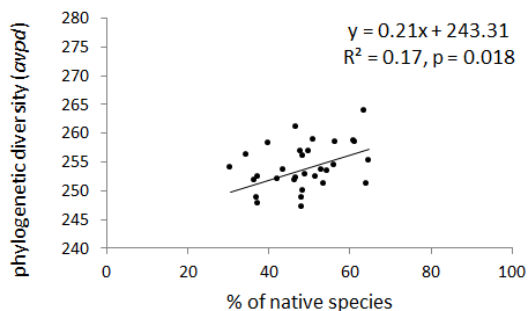
**Čeplová N., Lososová Z., Zelený D., Chytrý M., Danihelka J., Fajmon K., Láníková D., Preislerová Z., Řehořek V. & Tichý L. (2015): Phylogenetic diversity of central-European urban plant communities: effects of alien species and habitat types. – Preslia 87: 1–16.**

**Electronic Appendix 1.** – Numbers of sites (1-ha plots) with clustered, random and overdispersed community structure, calculated for seven types of urban habitats, using both types of null models. Total number of study sites per habitat was 32.

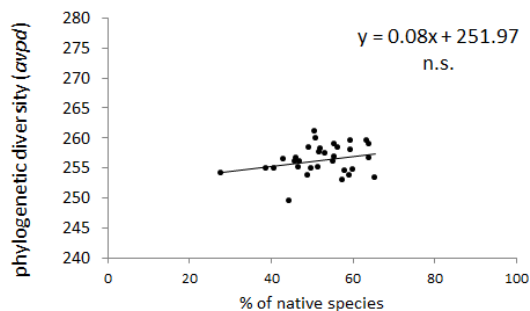
		First null model (disregarding species frequencies)						Second (frequency-based) null model					
		clustered		random		overdispersed		clustered		random		overdispersed	
		number of plots	%	number of plots	%	number of plots	%	number of plots	%	number of plots	%	number of plots	%
All species	square	28	88	4	12	0	0	4	12	27	84	1	3
	boulevard	32	100	0	0	0	0	2	6	28	88	2	6
	residential area compact	32	100	0	0	0	0	3	9	28	88	1	3
	residential area open	32	100	0	0	0	0	3	9	27	84	2	6
	park	31	97	1	3	0	0	3	9	26	81	3	9
	early successional site	32	100	0	0	0	0	5	16	24	75	3	9
	mid-successional site	32	100	0	0	0	0	5	16	25	78	2	6
Native species	square	1	3	31	97	0	0	0	0	32	100	0	0
	boulevard	18	56	14	44	0	0	0	0	31	97	1	3
	residential area compact	22	69	10	31	0	0	4	13	27	84	1	3
	residential area open	24	75	8	25	0	0	4	13	25	78	3	9
	park	18	56	14	44	0	0	4	13	28	88	0	0
	early successional site	25	78	7	22	0	0	1	3	31	97	0	0
	mid-successional site	29	91	3	9	0	0	1	3	27	84	4	13
Archaeophytes	square	4	12	28	88	0	0	0	0	31	97	1	3
	boulevard	14	44	18	56	0	0	2	6	28	88	2	6
	residential area compact	14	44	18	56	0	0	0	0	28	88	4	13
	residential area open	18	56	14	44	0	0	3	9	28	88	1	3
	park	11	34	21	66	0	0	1	3	29	91	2	6
	early successional site	27	84	5	16	0	0	4	13	26	81	2	6
	mid-successional site	23	72	9	28	0	0	5	16	27	84	0	0
Neophytes	square	22	69	10	31	0	0	11	34	21	66	0	0
	boulevard	21	66	11	34	0	0	9	28	23	72	0	0
	residential area compact	18	56	14	44	0	0	6	19	26	81	0	0
	residential area open	23	72	9	28	0	0	8	25	23	72	1	3
	park	10	31	22	69	0	0	1	3	29	91	2	6
	early successional site	21	66	11	34	0	0	8	25	24	75	0	0
	mid-successional site	18	56	14	44	0	0	6	19	26	81	0	0

**Electronic Appendix 2.** – Relationships between phylogenetic diversity (*avpd*) and percentage number of native species (relative to the total count of all species) for individual urban habitats. Data points correspond to 1-ha plots (n = 32). n.s. = non significant ( $p \geq 0.05$ )

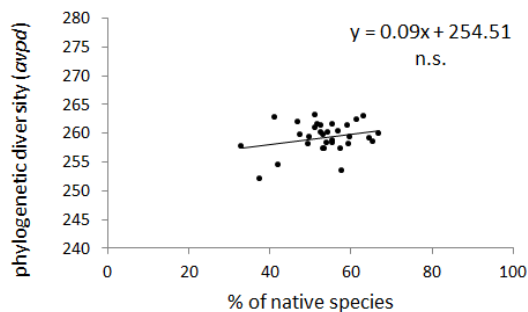
a) Square



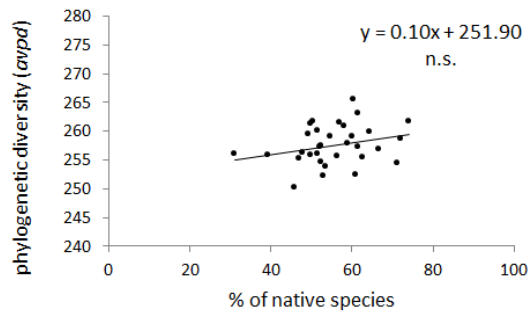
b) Boulevard



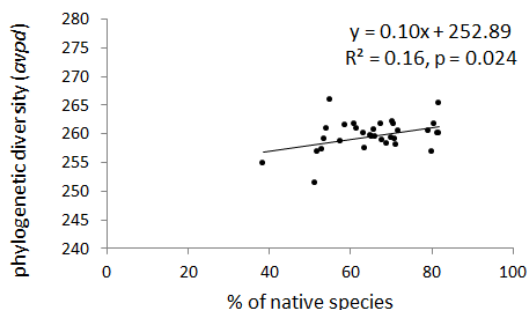
c) Residential area compact



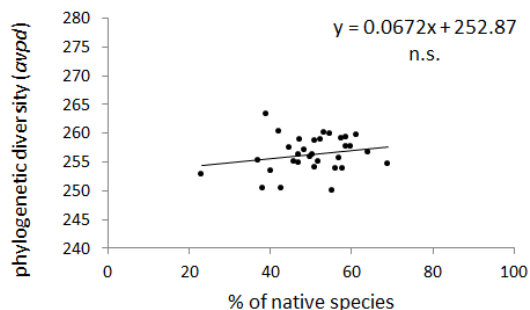
d) Residential area open



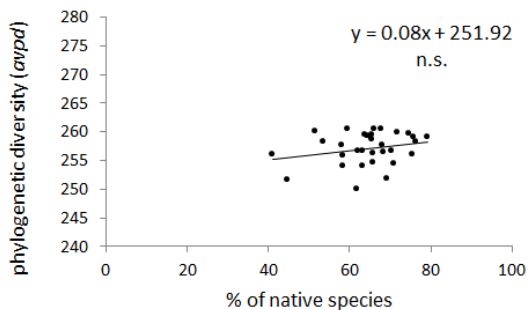
e) Park



f) Early successional site

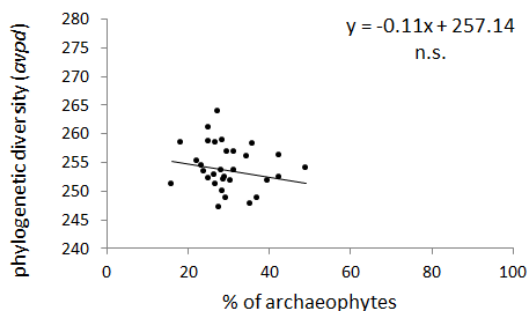


g) Mid-successional site

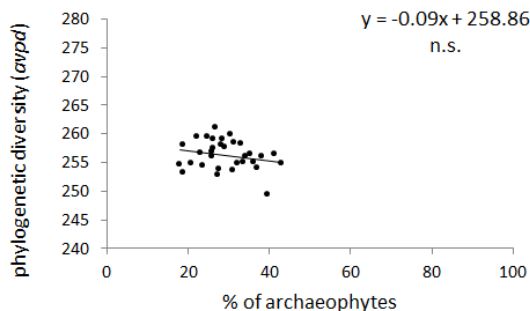


**Electronic Appendix 3.** – Relationships between phylogenetic diversity (*avpd*) and percentage number of archaeophytes (relative to the total count of all species) for individual urban habitats. Data points correspond to 1-ha plots (n = 32). n.s. = non significant ( $p \geq 0.05$ )

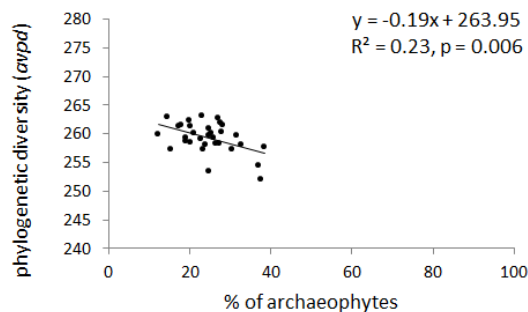
a) Square



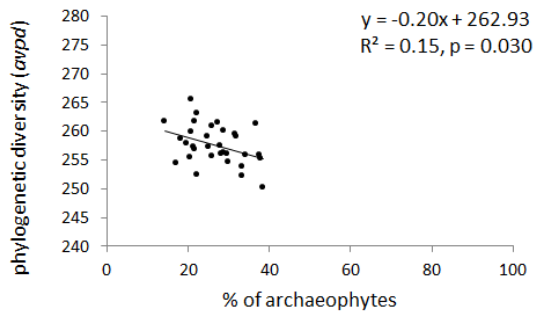
b) Boulevard



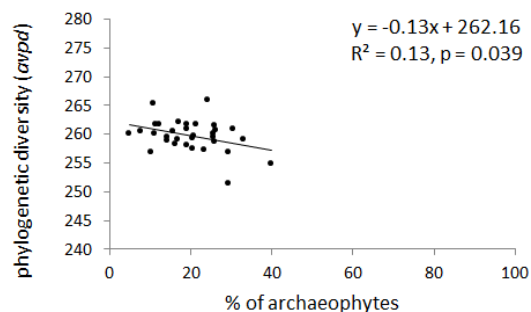
c) Residential area compact



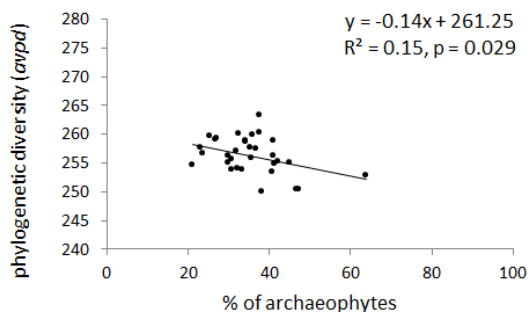
d) Residential area open



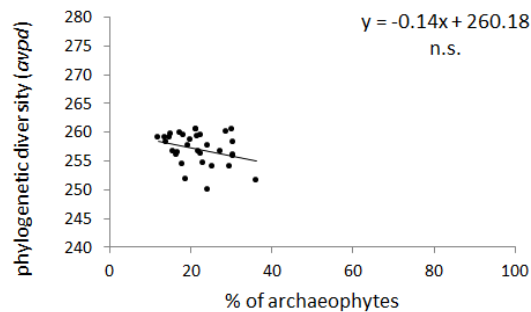
e) Park



f) Early successional site



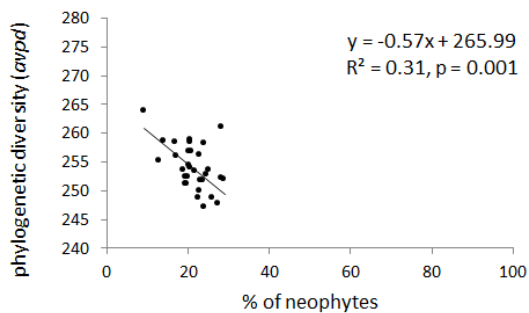
g) Mid-successional site



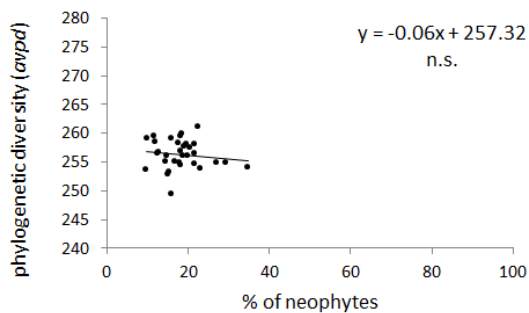
**Electronic Appendix 4.** – Relationships between phylogenetic diversity (*avpd*) and percentage number of neophytes (relative to the total count of all species) for individual urban habitats. Data points correspond to 1-ha plots (n = 32).

n.s. = non significant ( $p \geq 0.05$ )

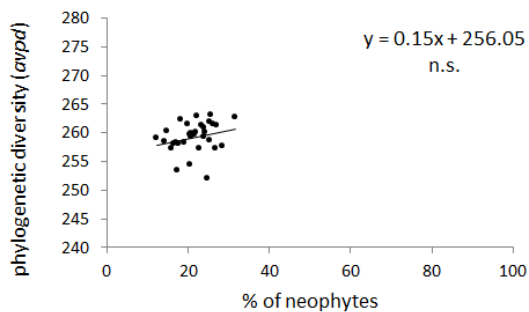
a) Square



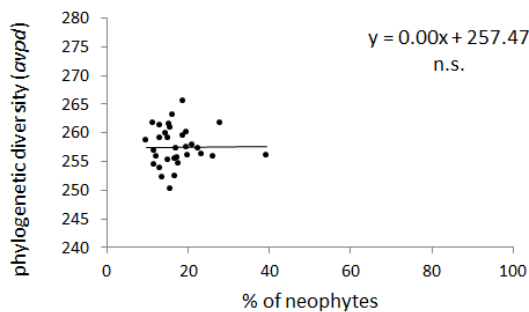
b) Boulevard



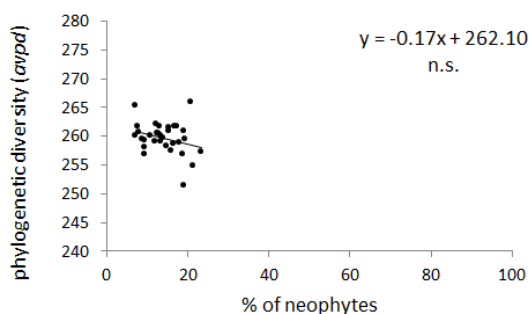
c) Residential area compact



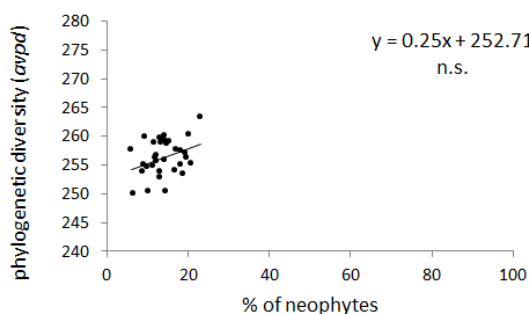
d) Residential area open



e) Park



f) Early successional site



g) Mid-successional site

